



University of the Virgin Islands
School of Education
Bachelor of Arts in Education
Elementary
AY 2013-2014

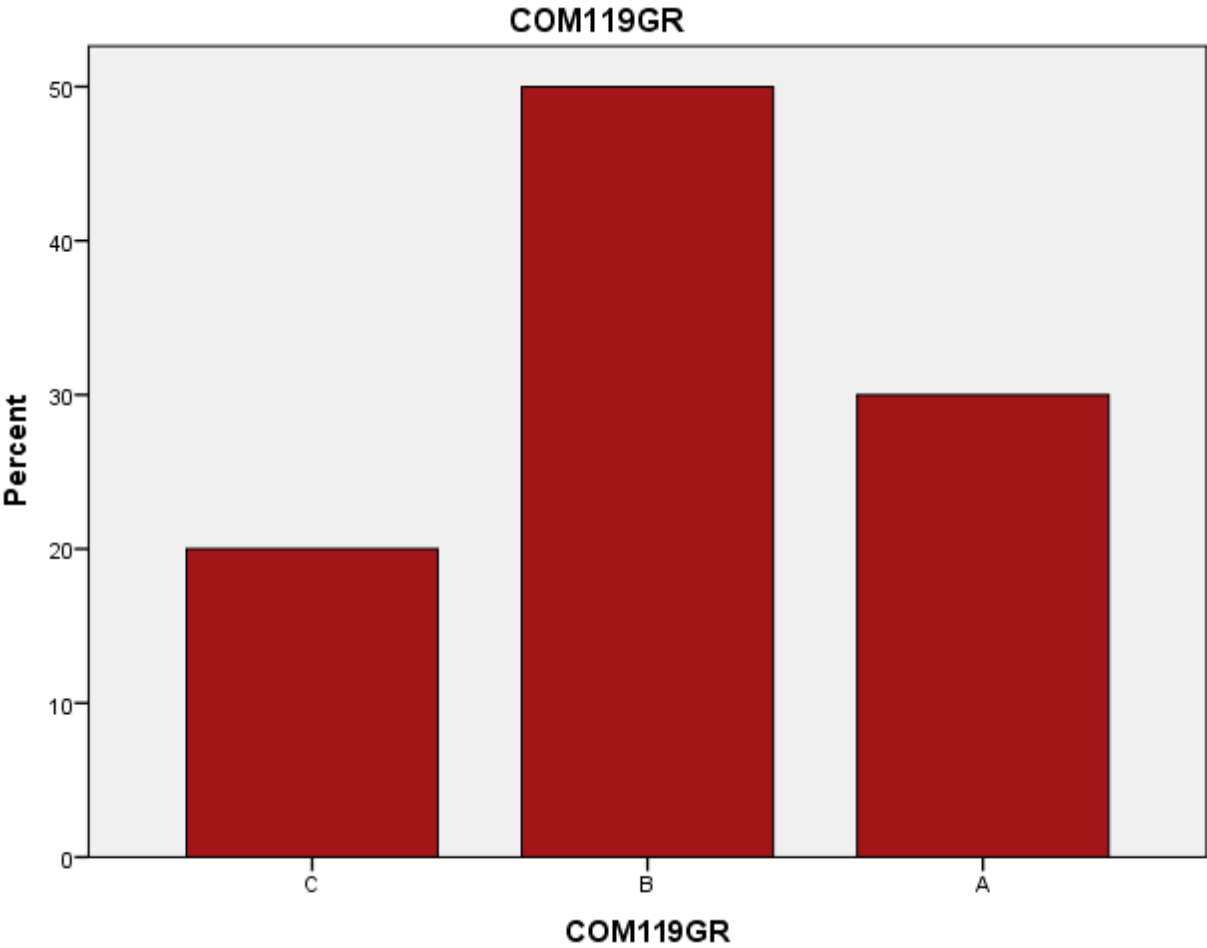
Candidate Entry Data

STT 2; STX 12

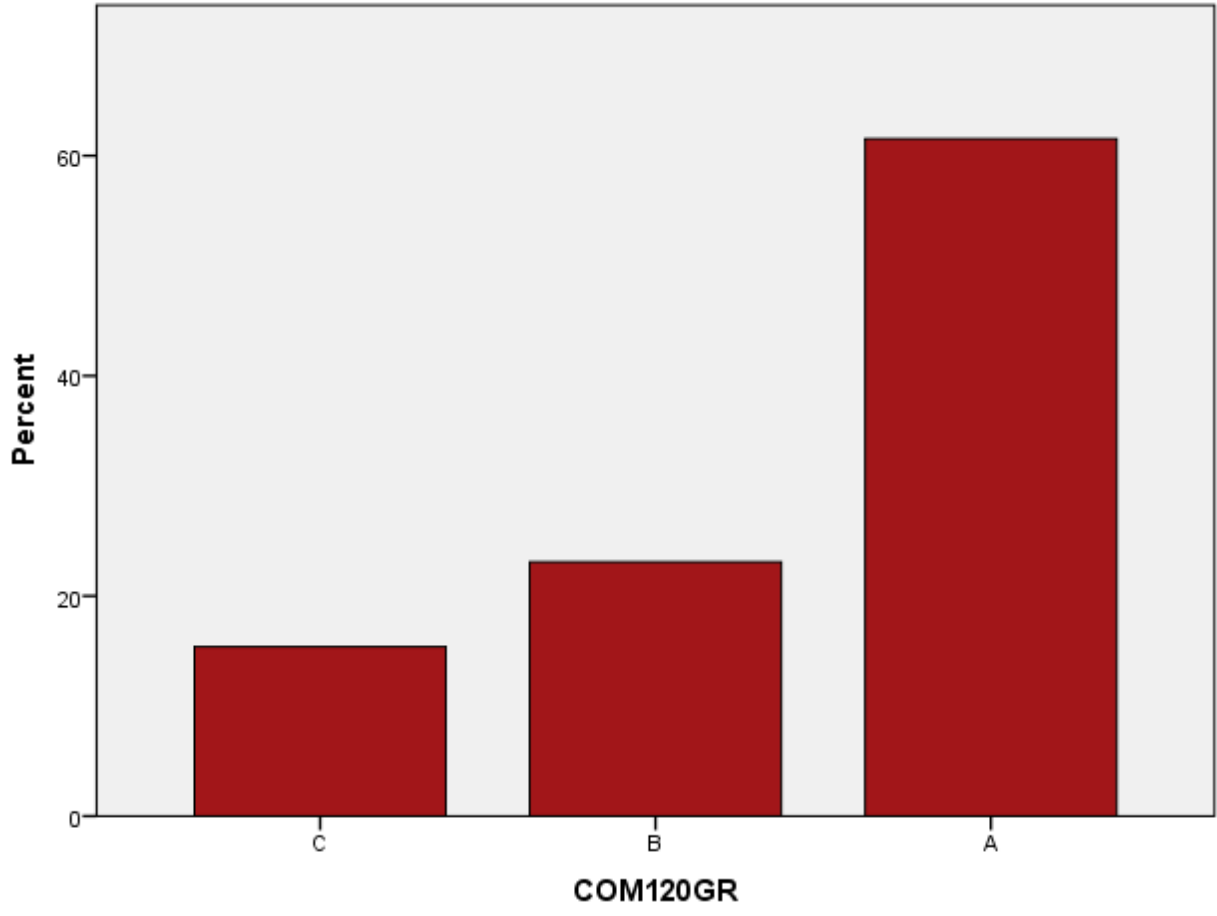
ADMIT * CAMPUS Crosstabulation

		CAMPUS		Total
		STT	STX	
ADMIT	Count	2	4	6
	Fall 13			
	% within ADMIT	33.3%	66.7%	100.0%
	% within CAMPUS	100.0%	33.3%	42.9%
	% of Total	14.3%	28.6%	42.9%
	Count	0	8	8
	Spring 14			
	% within ADMIT	0.0%	100.0%	100.0%
	% within CAMPUS	0.0%	66.7%	57.1%
% of Total	0.0%	57.1%	57.1%	
Total	Count	2	12	14
	% within ADMIT	14.3%	85.7%	100.0%
	% within CAMPUS	100.0%	100.0%	100.0%
	% of Total	14.3%	85.7%	100.0%

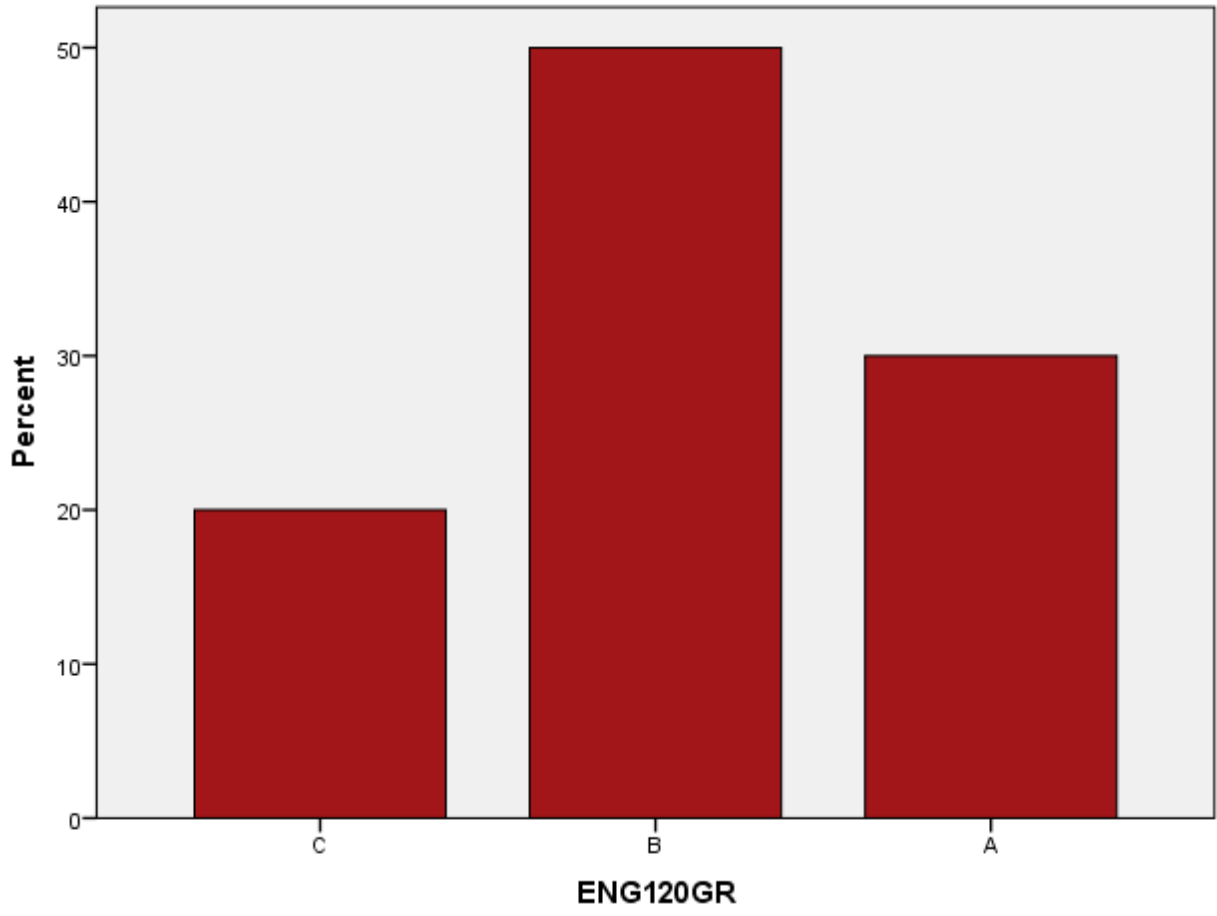
Bar Chart



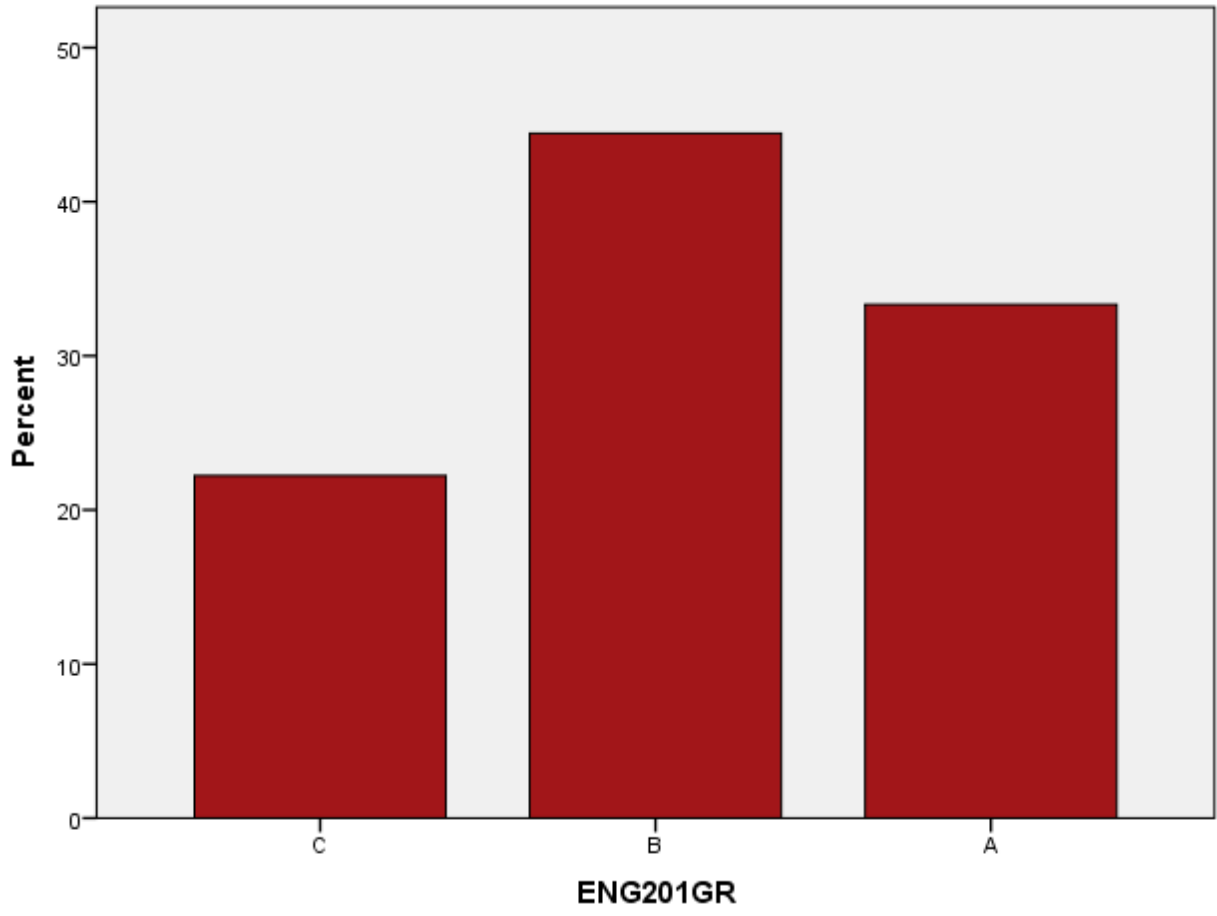
COM120GR



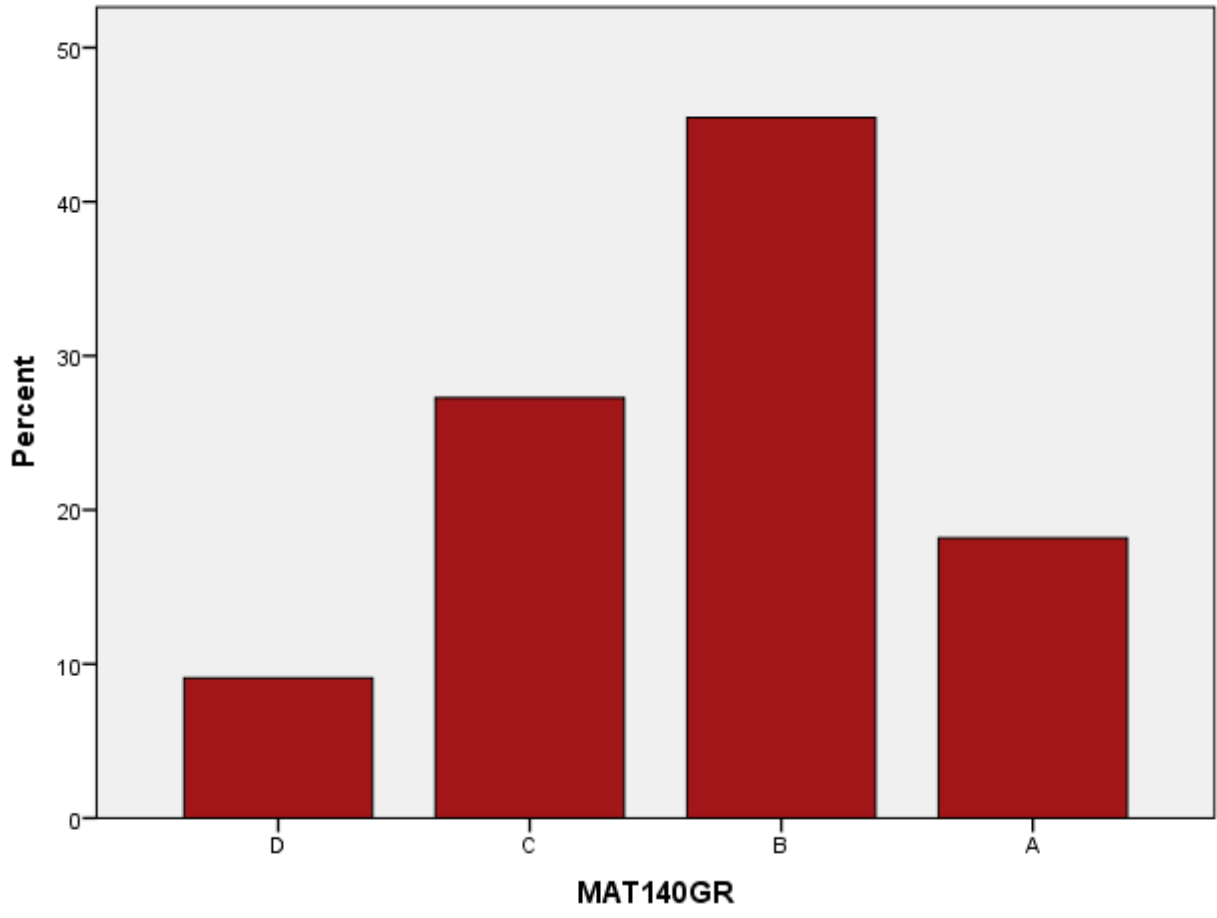
ENG120GR



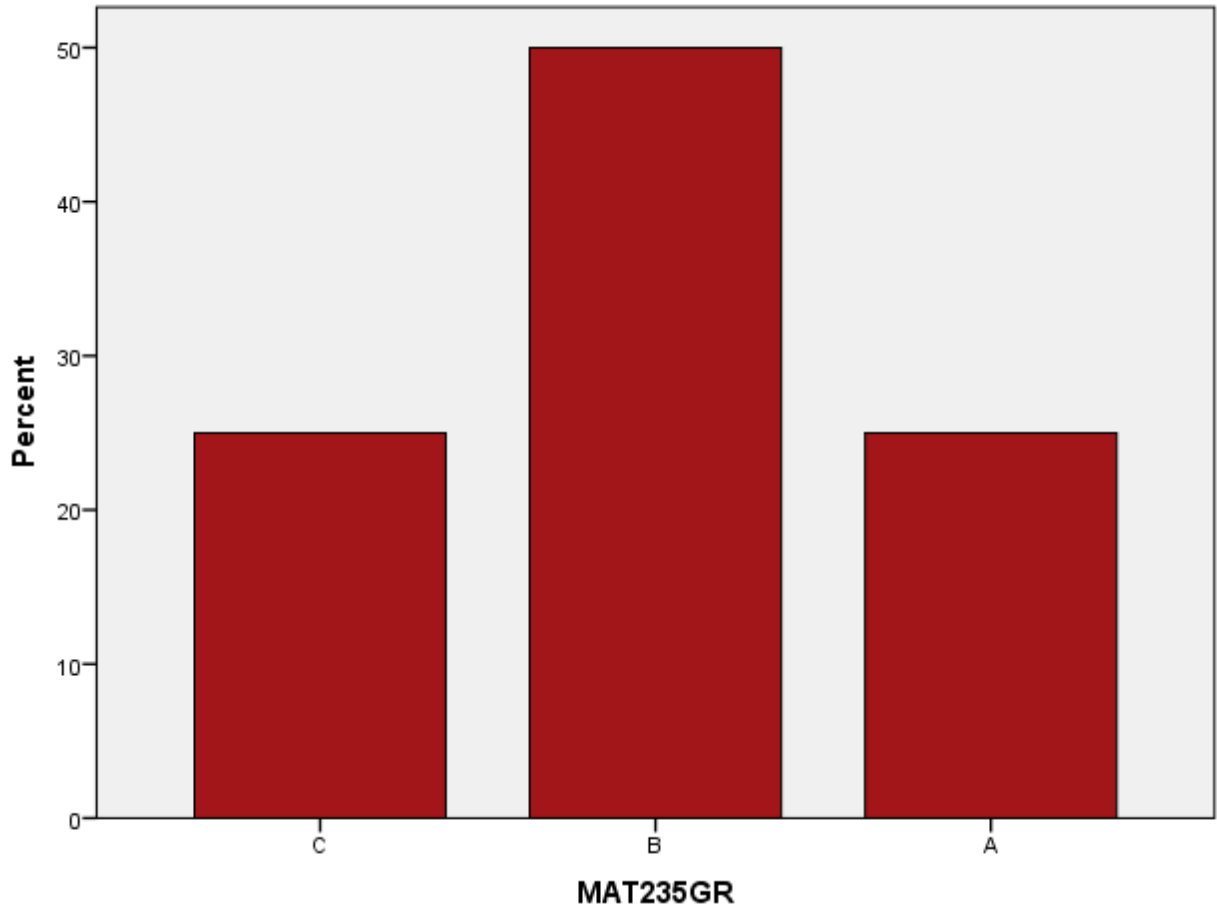
ENG201GR



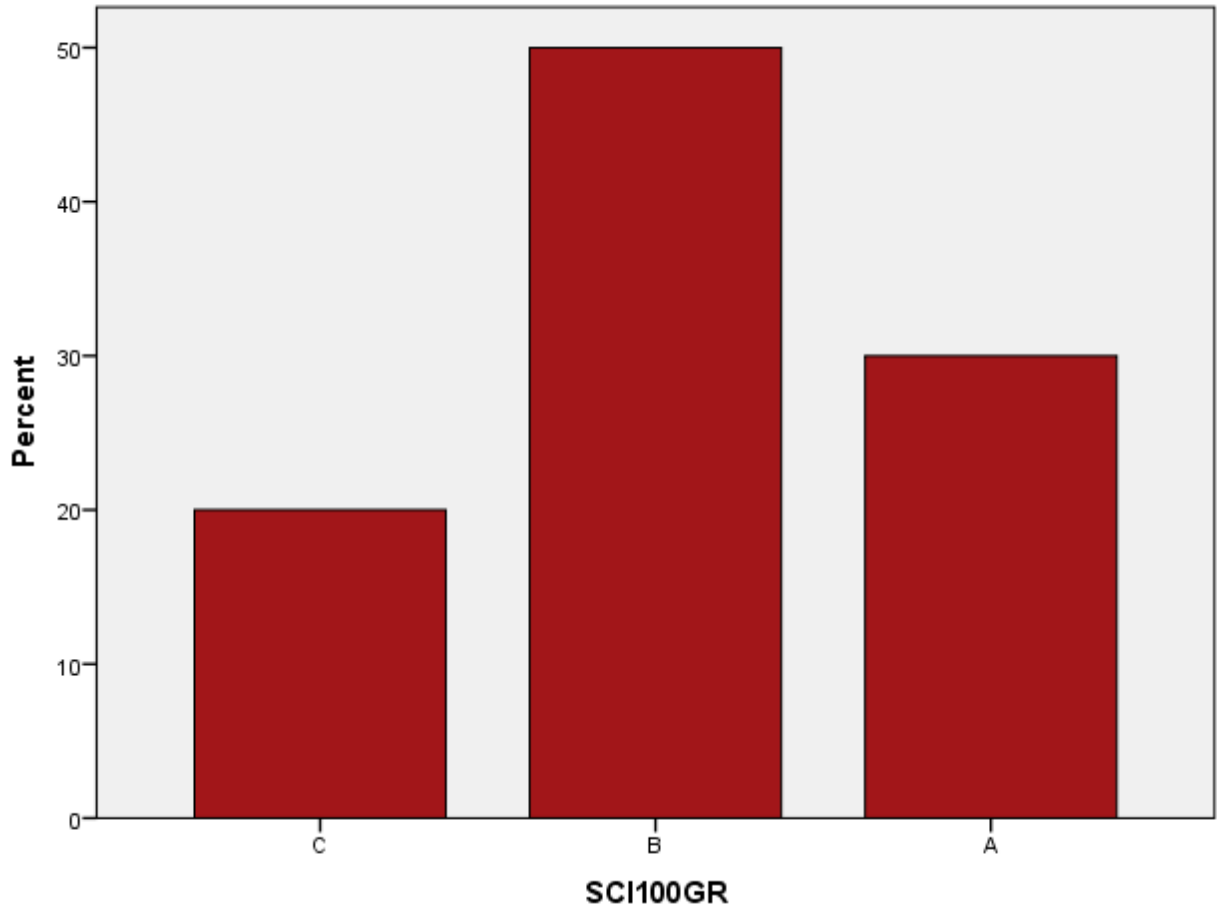
MAT140GR



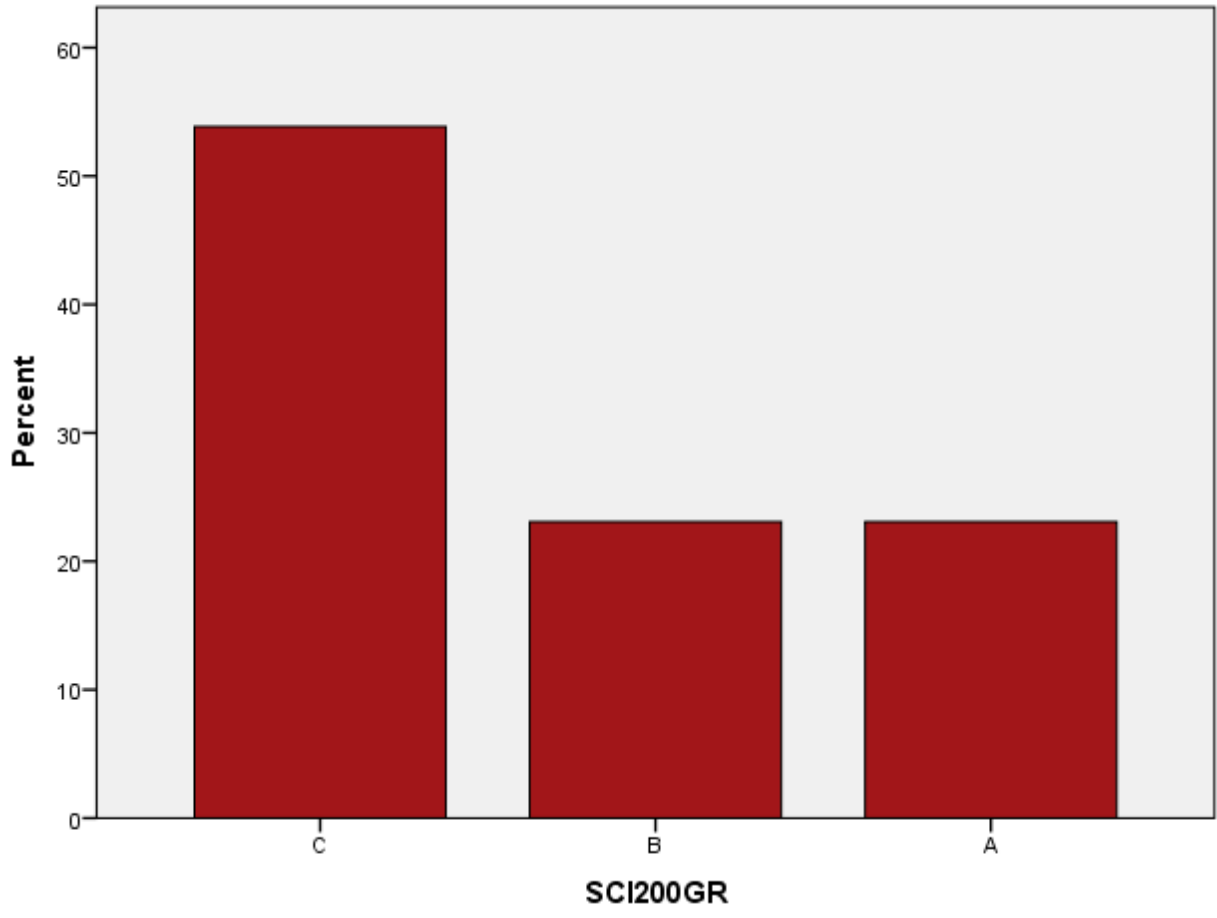
MAT235GR



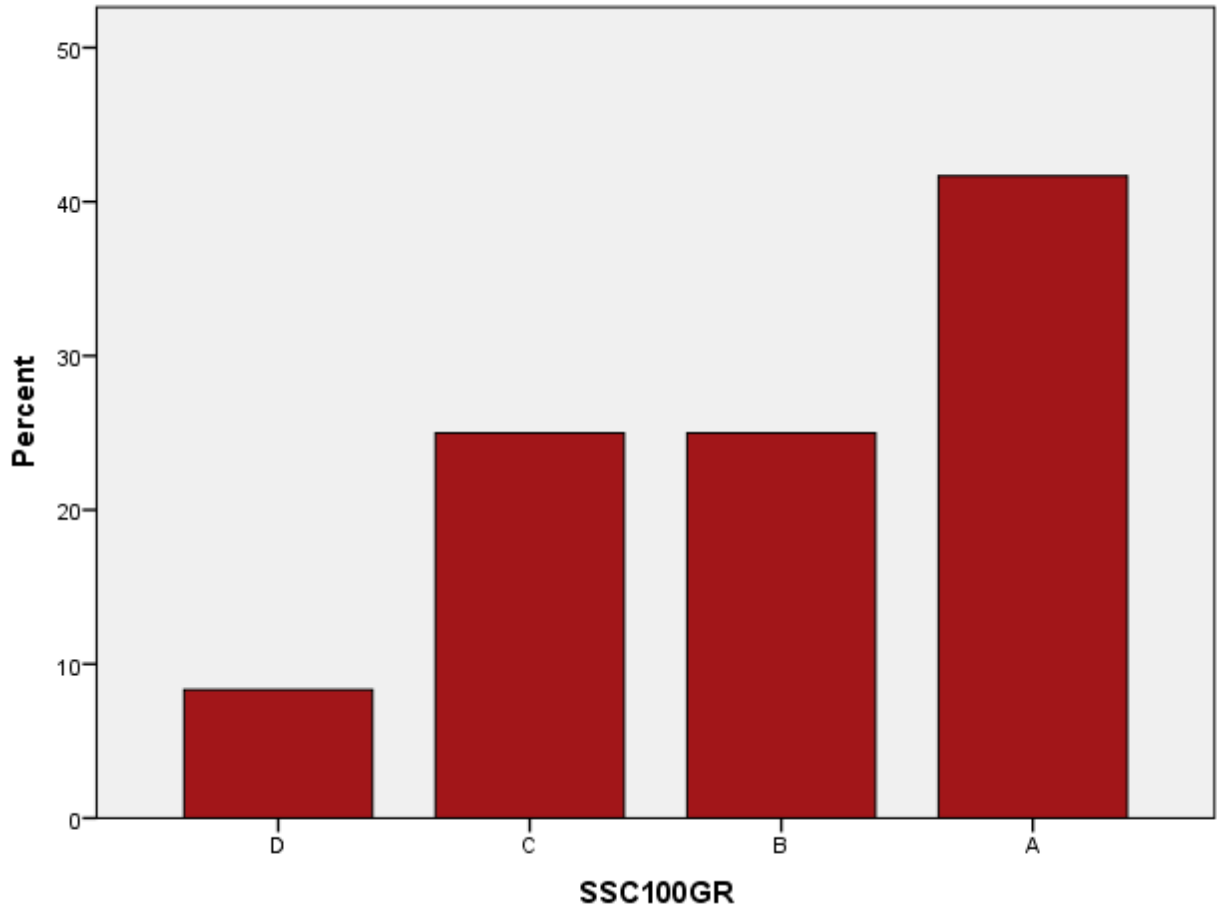
SCI100GR



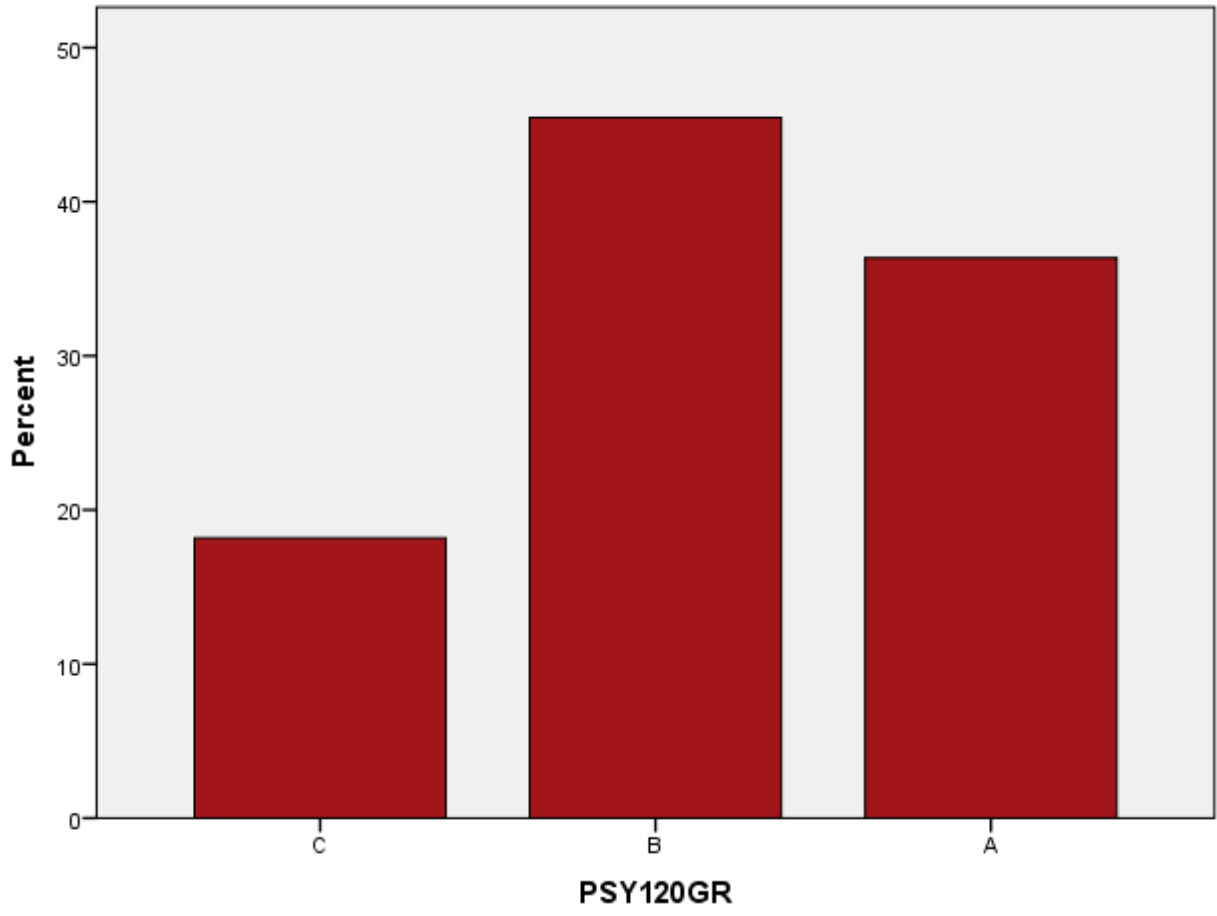
SCI200GR



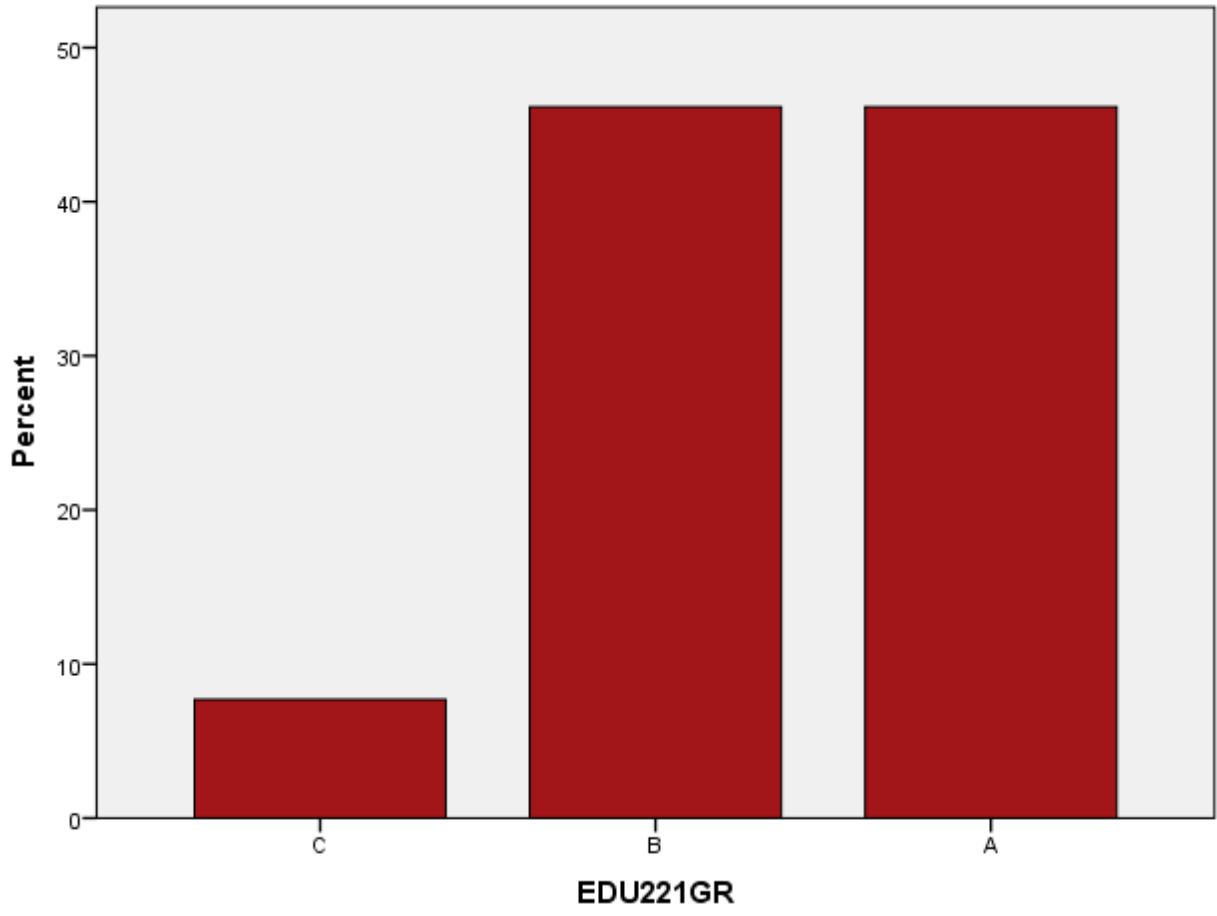
SSC100GR



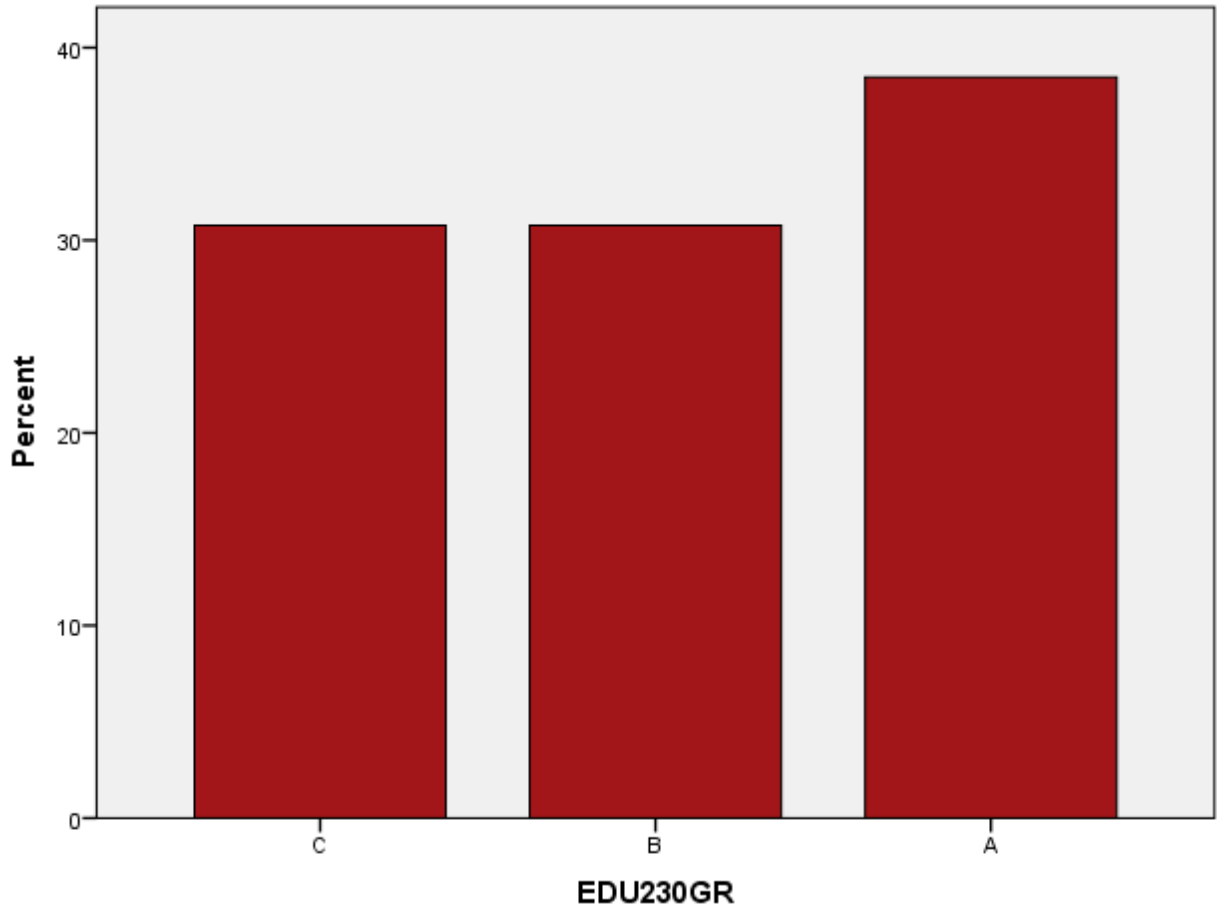
PSY120GR



EDU221GR



EDU230GR



EDU250GR

