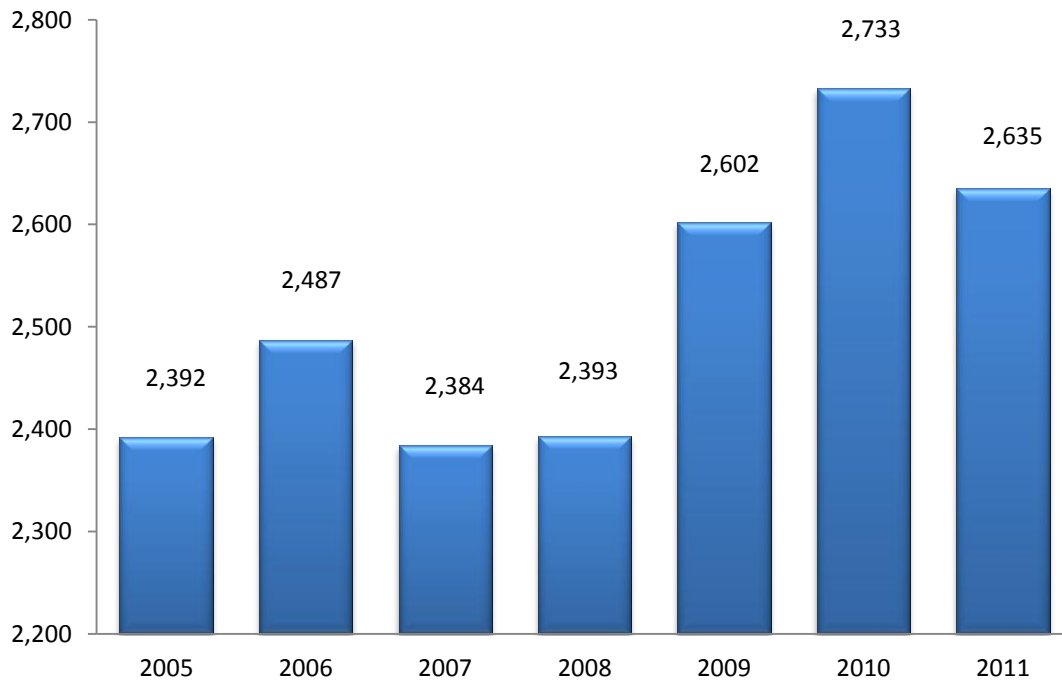


**Table 2.1 Headcount Enrollment by Level and Status
Fall 2005-Fall 2011**

Fall	Undergraduate		Graduate	Total
	Full-time	Part-time	Total	Headcount
2005	1,227	958	207	2,392
2006	1,263	1,009	215	2,487
2007	1,267	909	208	2,384
2008	1,385	827	181	2,393
2009	1,542	889	171	2,602
2010	1,601	919	213	2,733
2011	1,453	967	215	2,635

**Figure 2.1 Total Headcount Enrollment
Fall 2005-2011**



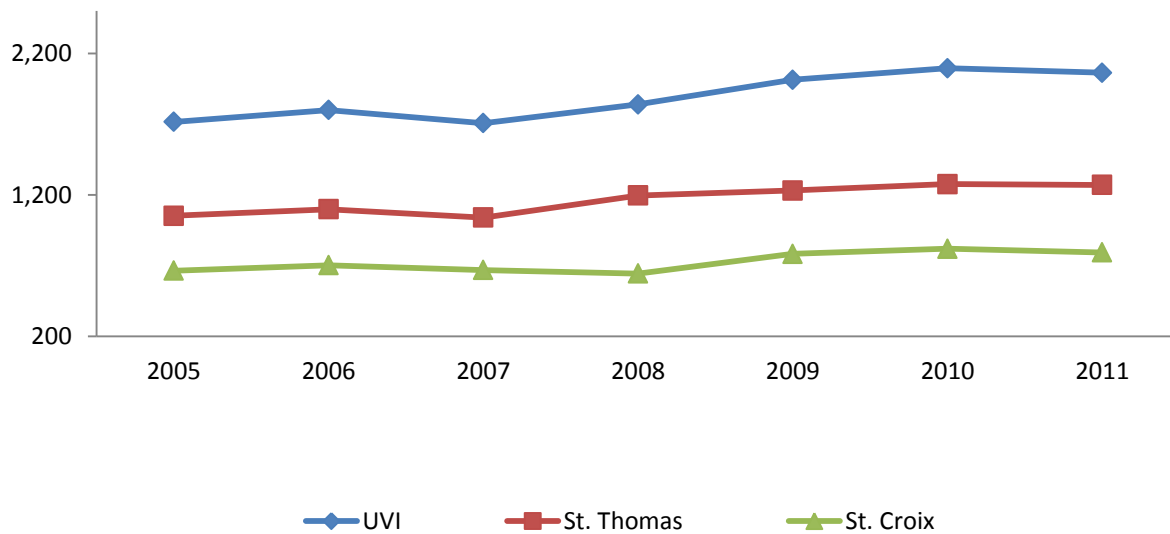
**Table 2.2 Undergraduate Full-Time Equivalent Enrollment (FTE)* by Campus
Fall 2005-Fall 2011**

Fall	UVI FTE			St. Thomas FTE			St. Croix FTE		
	All	FT **	PT***	All	FT	PT	All	FT	PT
2005	1,716	1,227	489	1,052	807	245	664	420	244
2006	1,800	1,263	537	1,098	840	258	702	423	279
2007	1,707	1,267	440	1,039	834	205	668	433	235
2008	1,839	1,385	454	1,196	947	249	643	438	205
2009	2,013	1,542	471	1,231	996	235	782	546	236
2010	2,095	1,601	494	1,276	1,030	246	819	571	248
2011	2,063	1,513	550	1,270	995	275	793	518	275

*FTE represents undergraduate full-time equivalent and is calculated by dividing the number of credit hours for part-time students by 12 added to the number of full-time students.

Full-time, *Part-time

**Figure 2.2 Undergraduate Full-Time Equivalent by Campus
Fall 2005-2011**



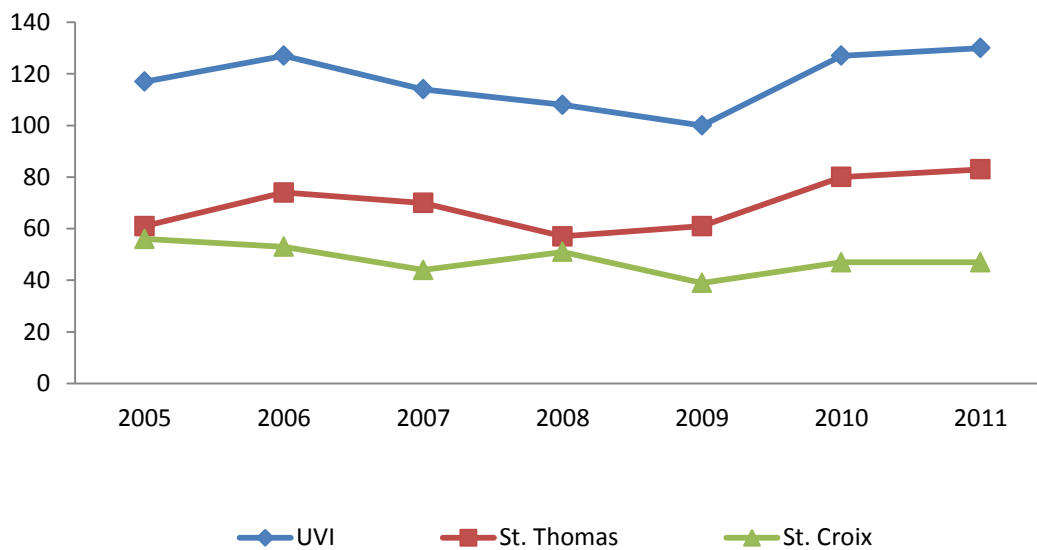
**Table 2.3 Graduate Full-Time Equivalent Enrollment (FTE)* by Campus
Fall 2005-Fall 2011**

Fall	UVI FTE			St. Thomas FTE			St. Croix FTE		
	All	FT**	PT***	All	FT	PT	All	FT	PT
2005	117	36	81	61	23	38	56	13	43
2006	127	30	97	74	19	55	53	11	42
2007	114	29	85	70	24	46	44	5	39
2008	108	45	63	57	30	27	51	15	36
2009	100	38	62	61	31	30	39	7	32
2010	127	54	73	80	37	43	47	17	30
2011	130	60	70	83	45	38	47	15	32

*FTE represents undergraduate full-time equivalent and is calculated by dividing the number of credit hours for part-time students by 9 added to the number of full-time students.

** Full-time, ***Part-time

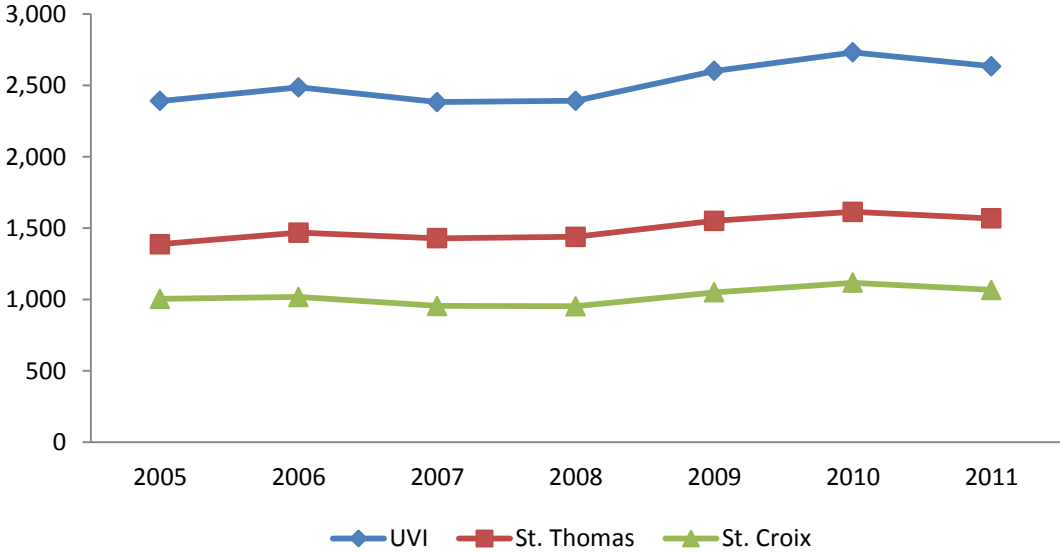
**Figure 2.3 Graduate Full-Time Equivalent by Campus
Fall 2005-2011**



**Table 2.4 Headcount Enrollment by Campus and Percentage
Fall 2004-Fall 2010**

Fall	Total (UVI)	St. Thomas		St. Croix	
	Headcount	Headcount	Percentage	Headcount	Percentage
2005	2,392	1,388	58	1,004	42
2006	2,487	1,469	59	1,018	41
2007	2,384	1,429	60	955	40
2008	2,393	1,440	60	953	40
2009	2,602	1,552	60	1,050	40
2010	2,733	1,615	59	1,118	41
2011	2,635	1,568	60	1,067	40

**Figure 2.4 Headcount Enrollment by Campus
Fall 2005-2011**



**Table 2.5 Full-Time Undergraduate Enrollment by Class and Percent
Fall 2005-Fall 2011**

Fall	Total	Freshmen		Sophomores		Juniors		Seniors		Unclassified	
		Count	Percent	Count	Percent	Count	Percent	Count	Percent	Count	Percent
2005	1,227	547	45	284	23	201	16	188	15	7	1
2006	1,263	562	44	318	25	183	14	196	16	4	0
2007	1,267	448	35	338	27	207	16	270	21	4	0
2008	1,385	553	40	306	22	241	17	280	20	5	0
2009	1,542	693	45	358	23	239	15	248	16	4	0
2010	1,601	777	49	332	21	241	15	251	16	0	0
2011	1,453	572	39	354	24	240	17	287	20	0	0

**Figure 2.5 UVI Full-Time Undergraduate Enrollment by Class
Fall 2005-2011**

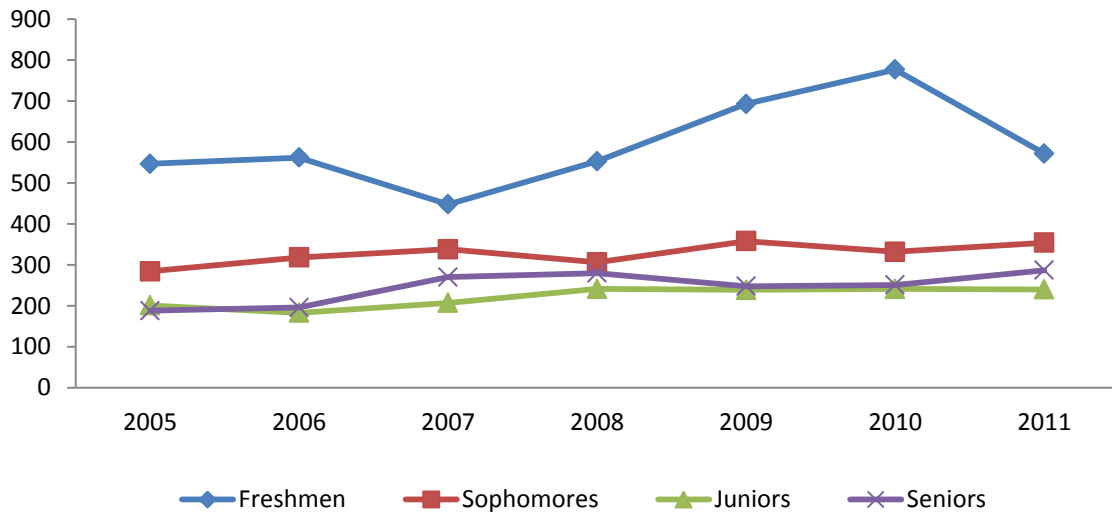
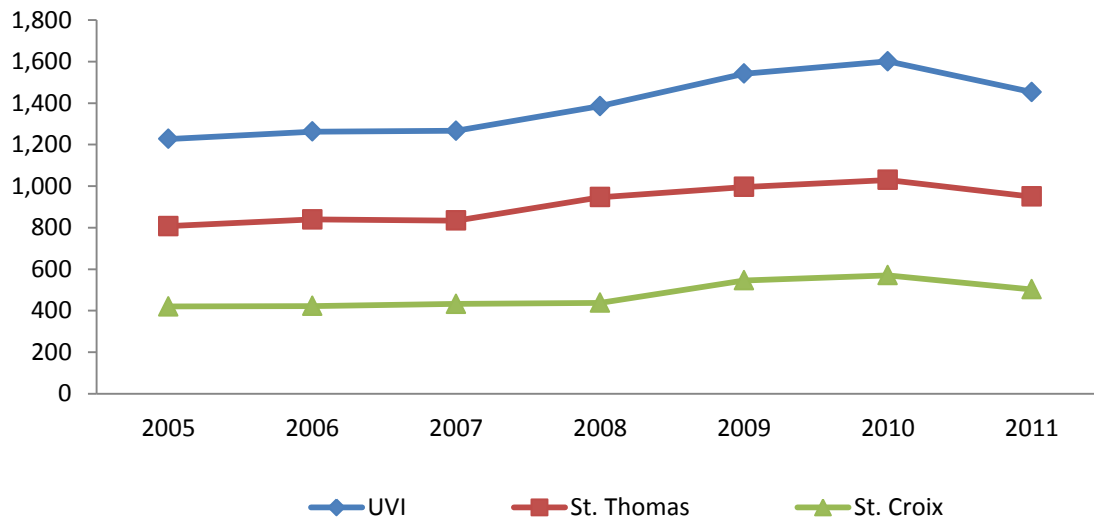


Table 2.6 Full-Time Undergraduate Enrollment by Campus and Percentage Fall 2005-Fall 2011

Fall	Total (UVI)	St. Thomas		St. Croix	
	Count	Count	Percentage	Count	Percentage
2005	1,227	807	66	420	34
2006	1,263	840	67	423	33
2007	1,267	834	66	433	34
2008	1,385	947	68	438	32
2009	1,542	996	65	546	35
2010	1,601	1030	64	571	36
2011	1,453	950	65	503	35

Figure 2.6 Full-Time Undergraduate Enrollment by Campus Fall 2005-2011



**Table 2.7 Full-Time Undergraduate Enrollment by Gender and Percentage
Fall 2005-Fall 2011**

Fall	Total	Female		Male	
	Count	Count	Percentage	Count	Percentage
2005	1,227	901	73	326	27
2006	1,263	941	75	322	25
2007	1,267	933	74	334	26
2008	1,385	977	71	408	29
2009	1,542	1,087	70	455	30
2010	1,601	1,132	71	469	29
2011	1,453	1,005	69	448	31

**Figure 2.7 UVI Full-Time Undergraduate Enrollment by Gender
Fall 2005-2011**

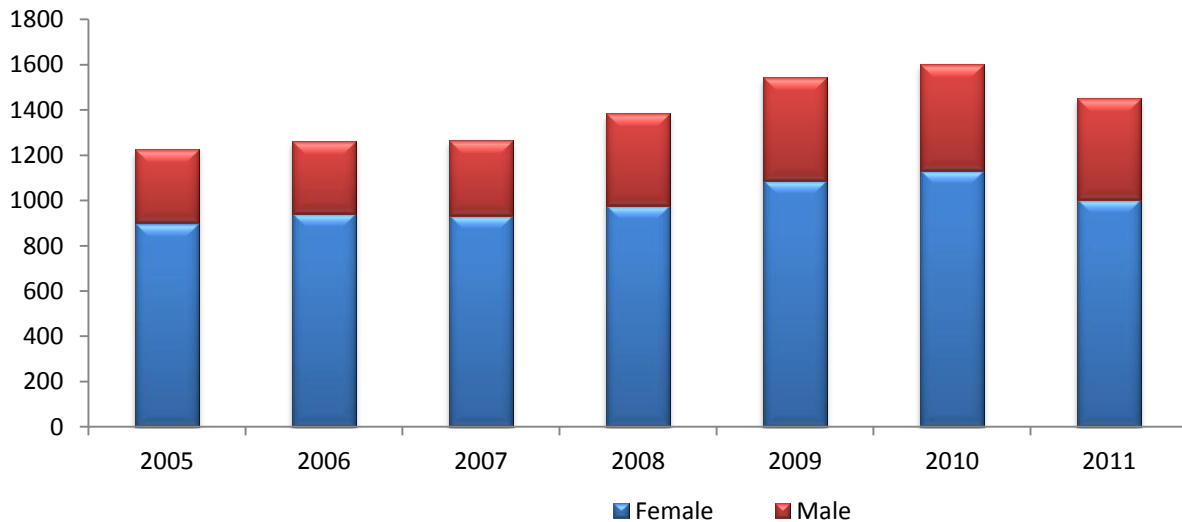
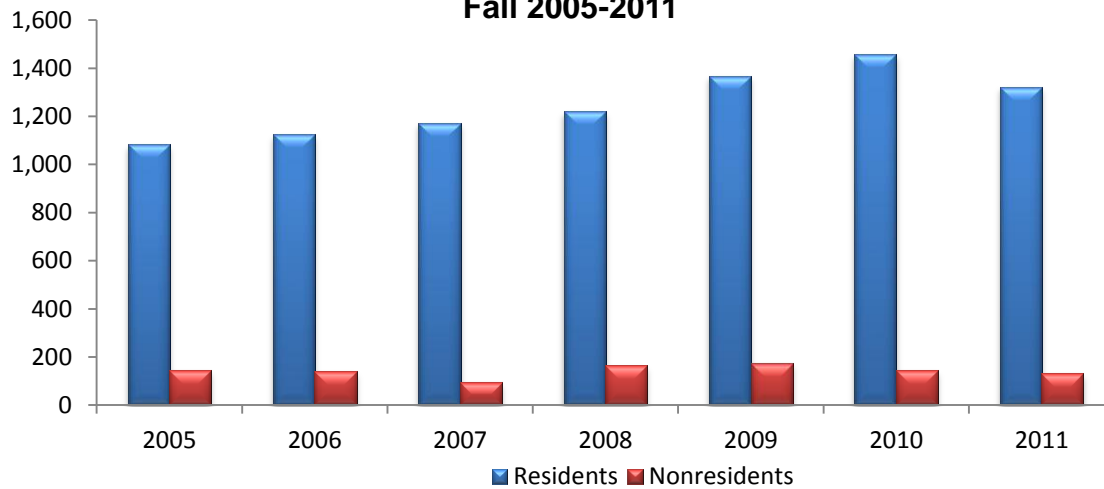


Table 2.8 Full-Time Undergraduate Enrollment by Residency and Percentage Fall 2005-Fall 2011

Fall	Total	Residents		Nonresidents	
	Full-time	Count	Percentage	Count	Percentage
2005	1,227	1,082	88	145	12
2006	1,263	1,123	89	140	11
2007	1,267	1,172	93	95	7
2008	1,385	1,221	88	164	12
2009	1,542	1,367	89	175	11
2010	1,601	1,456	91	145	9
2011	1,453	1,322	91	131	9

Figure 2.8 UVI Full-Time Undergraduate Enrollment by Residency Fall 2005-2011



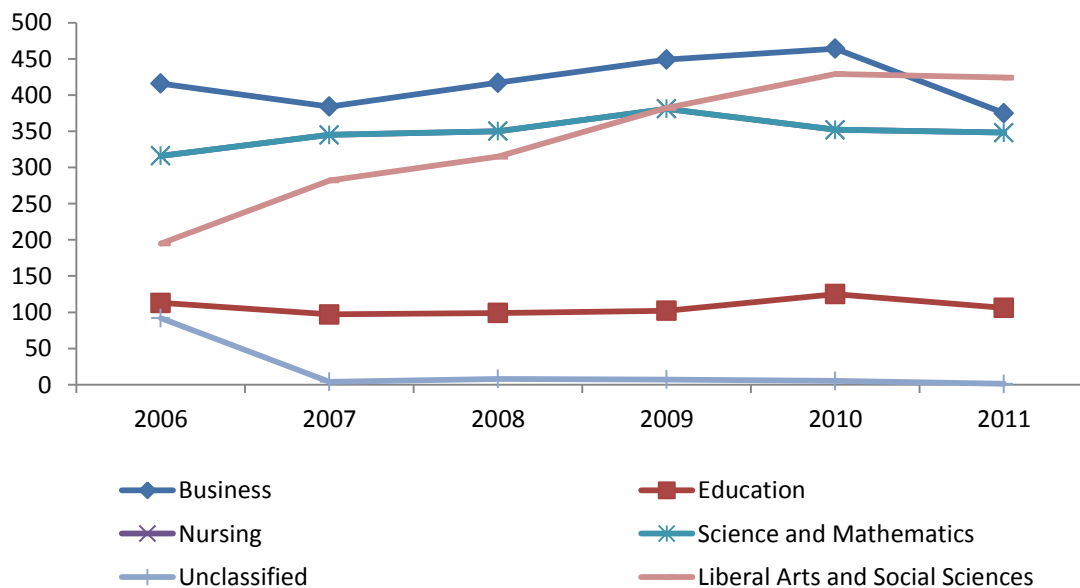
**Table 2.9 Full-Time Undergraduate Enrollment by Division
Fall 2006-Fall 2011**

School/College	2006	2007	2008	2009	2010	2011
Business	416	384	417	449	464	375
Education	113	97	99	102	125	106
Nursing	131	155	196	221	226	199
Science and Mathematics	316	345	350	381	352	348
Liberal Arts and Social Sciences	195	282	315	382	429	424
Unclassified**	92	4	8	7	5	1
Total	1,263	1,267	1,385	1,542	1,601	1,453

* As of Fall 2005, the Social Sciences and Humanities Division have been combined.

** Unclassified includes undecided and no major code assigned.

**2.9 Full-Time Undergraduate Enrollment by Division
Fall 2006-Fall 2011**



**Table 2.10 Full-Time Undergraduate Enrollment by Division and Major
Fall 2005-Fall 2011**

College/School	2005	2006	2007	2008	2009	2010	2011
Business							
Accounting	122	119	110	115	116	94	77
Business Administration	202	238	218	257	287	312	246
Business Management	27	27	26	27	21	31	25
Computer Information Systems	32	26	23	17	25	26	22
Hotel and Restaurant Management	3	4	7	1	0	1	5
Office Assistance/Office Systems	1	2	*	*	*	*	*
Education							
Elementary Education	93	89	83	70	69	70	49
Inclusive Early Childhood Education	12	24	14	29	66	29	26
Pre-Education	*	*	*	*	*	26	31
Liberal Arts and Social Sciences							
Communication	10	18	14	25	26	34	30
Criminal Justice	*	*	1	25	60	77	103
English	27	20	28	23	14	15	28
Humanities	11	10	14	6	12	9	8
Music; Music Education	8	10	8	9	17	15	14
Police Science and Administration	11	20	9	11	6	4	0
Psychology	81	74	74	87	96	110	97
Social Sciences	29	25	31	24	22	23	18
Social Work	12	9	12	10	12	9	16
Speech Communication and Theater	4	3	4	2	2	1	1
Nursing							
Nursing	109	112	117	144	148	103	59
Nursing Education	23	19	38	52	73	60	22
Pre-Nursing	*	*	*	*	*	63	118
Science and Mathematics							
Applied Mathematics	24	31	35	39	42	64	78
Biology	94	125	137	130	126	118	121
Chemistry	17	19	21	21	26	22	19
Computer Science	71	60	65	63	80	68	67
Marine Biology	23	30	26	26	22	27	36
Mathematics	18	19	22	20	21	18	11
Physics	1	0	1	1	0	0	2
Process Technology	30	32	38	50	64	35	14

*Program not offered