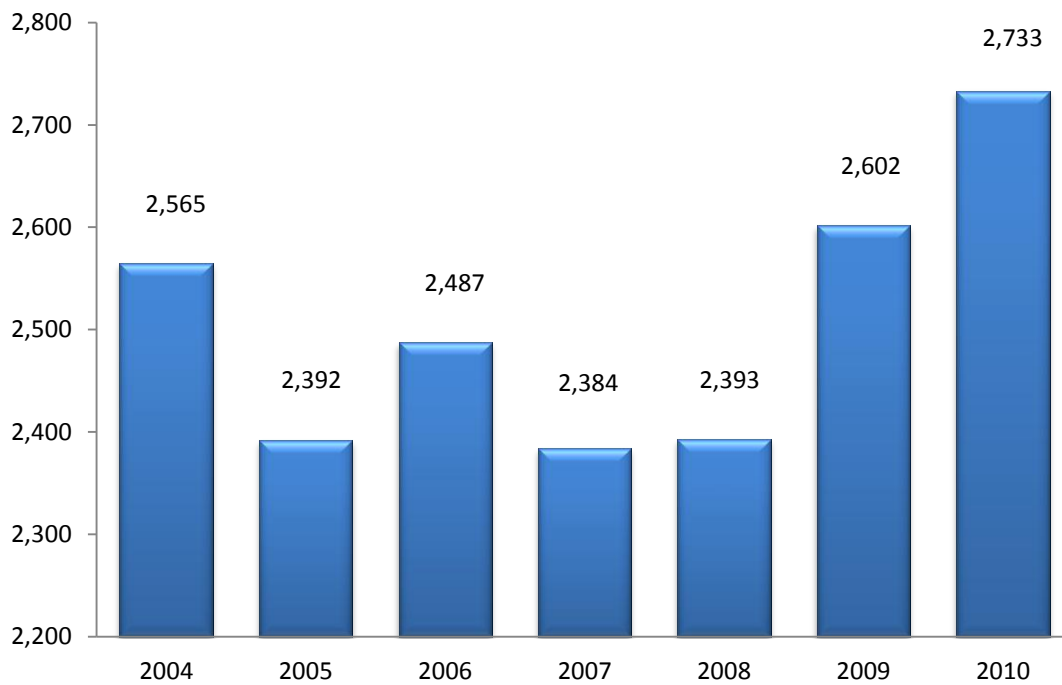


**Table 2.1 Headcount Enrollment by Level and Status
Fall 2004-Fall 2010**

Fall	Undergraduate		Graduate	Total
	Full-time	Part-time	Total	Headcount
2004	1,231	1,121	213	2,565
2005	1,227	958	207	2,392
2006	1,263	1,009	215	2,487
2007	1,267	909	208	2,384
2008	1,385	827	181	2,393
2009	1,542	889	171	2,602
2010	1,601	919	213	2,733

**Figure 2.1 Total Headcount Enrollment
Fall 2004-2010**



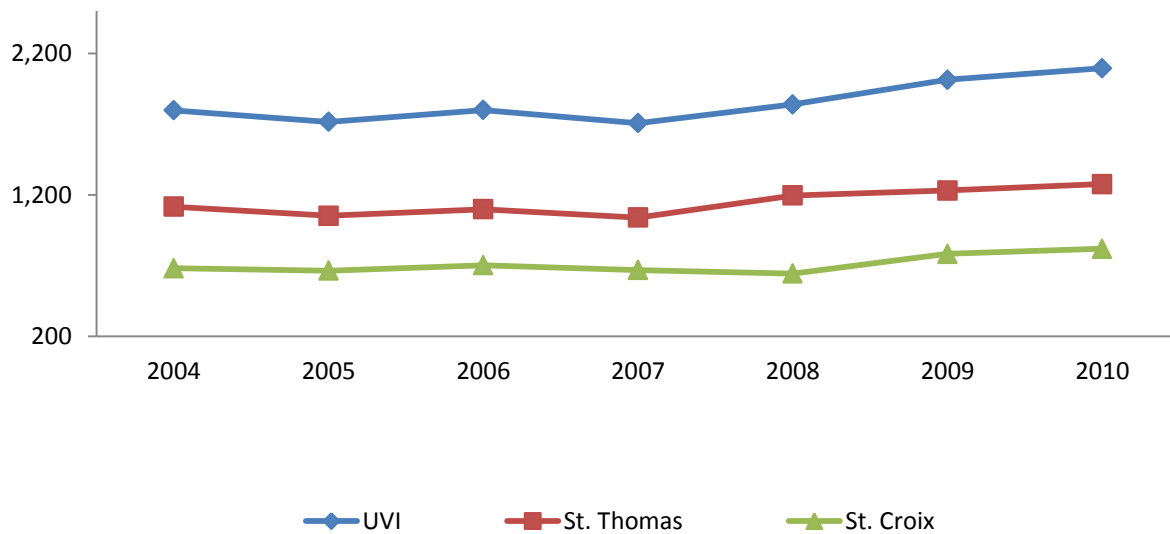
**Table 2.2 Undergraduate Full-Time Equivalent Enrollment (FTE)* by Campus
Fall 2004-Fall 2010**

Fall	UVI FTE			St. Thomas FTE			St. Croix FTE		
	All	FT **	PT***	All	FT	PT	All	FT	PT
2004	1,797	1,231	566	1,116	816	300	681	415	266
2005	1,716	1,227	489	1,052	807	245	664	420	244
2006	1,800	1,263	537	1,098	840	258	702	423	279
2007	1,707	1,267	440	1,039	834	205	668	433	235
2008	1,839	1,385	454	1,196	947	249	643	438	205
2009	2,013	1,542	471	1,231	996	235	782	546	236
2010	2,095	1,601	494	1,276	1,030	246	819	571	248

*FTE represents undergraduate full-time equivalent and is calculated by dividing the number of credit hours for part-time students by 12 added to the number of full-time students.

Full-time, *Part-time

**Figure 2.2 Undergraduate Full-Time Equivalent by Campus
Fall 2004-2010**



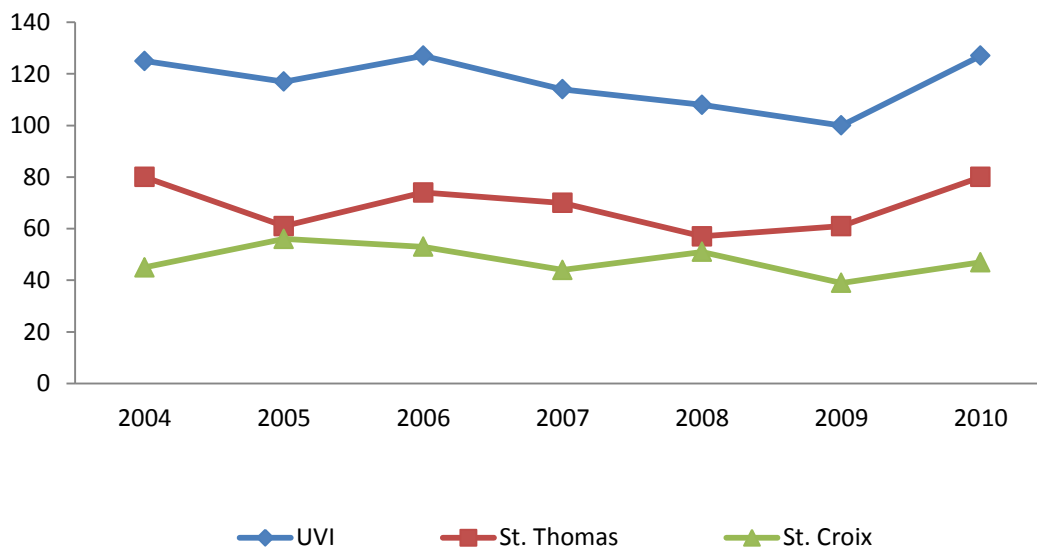
**Table 2.3 Graduate Full-Time Equivalent Enrollment (FTE)* by Campus
Fall 2004-Fall 2010**

Fall	UVI FTE			St. Thomas FTE			St. Croix FTE		
	All	FT**	PT***	All	FT	PT	All	FT	PT
2004	125	27	98	80	21	59	45	6	39
2005	117	36	81	61	23	38	56	13	43
2006	127	30	97	74	19	55	53	11	42
2007	114	29	85	70	24	46	44	5	39
2008	108	45	63	57	30	27	51	15	36
2009	100	38	62	61	31	30	39	7	32
2010	127	54	73	80	37	43	47	17	30

*FTE represents undergraduate full-time equivalent and is calculated by dividing the number of credit hours for part-time students by 9 added to the number of full-time students.

** Full-time, ***Part-time

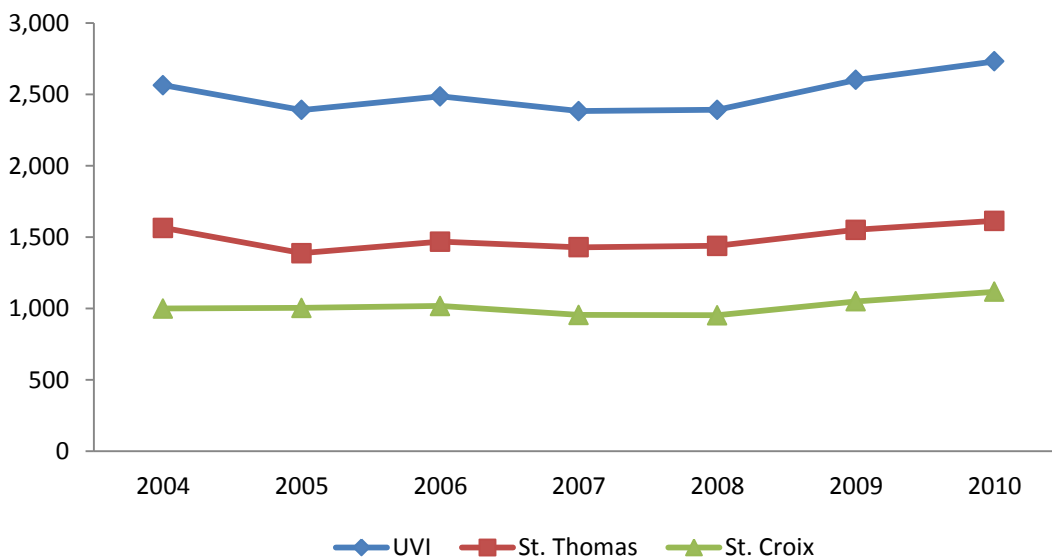
**Figure 2.3 Graduate Full-Time Equivalent by Campus
Fall 2004-2010**



**Table 2.4 Headcount Enrollment by Campus and Percentage
Fall 2004-Fall 2010**

Fall	Total (UVI)	St. Thomas		St. Croix	
	Headcount	Headcount	Percentage	Headcount	Percentage
2004	2,565	1565	61	1000	39
2005	2,392	1388	58	1004	42
2006	2,487	1469	59	1018	41
2007	2,384	1429	60	955	40
2008	2,393	1440	60	953	40
2009	2,602	1552	60	1050	40
2010	2,733	1615	59	1118	41

**Figure 2.4 Headcount Enrollment by Campus
Fall 2004-2010**



**Table 2.5 Full-Time Undergraduate Enrollment by Class and Percent
Fall 2004-Fall 2010**

Fall	Total	Freshmen		Sophomores		Juniors		Seniors		Unclassified	
		Count	Percent	Count	Percent	Count	Percent	Count	Percent	Count	Percent
2004	1,231	444	36	329	27	191	16	267	22	0	0
2005	1,227	547	45	284	23	201	16	188	15	7	1
2006	1,263	562	44	318	25	183	14	196	16	4	0
2007	1,267	448	35	338	27	207	16	270	21	4	0
2008	1,385	553	40	306	22	241	17	280	20	5	0
2009	1,542	693	45	358	23	239	15	248	16	4	0
2010	1,601	777	49	332	21	241	15	251	16	0	0

**Figure 2.5 UVI Full-Time Undergraduate Enrollment by Class
Fall 2004-2010**

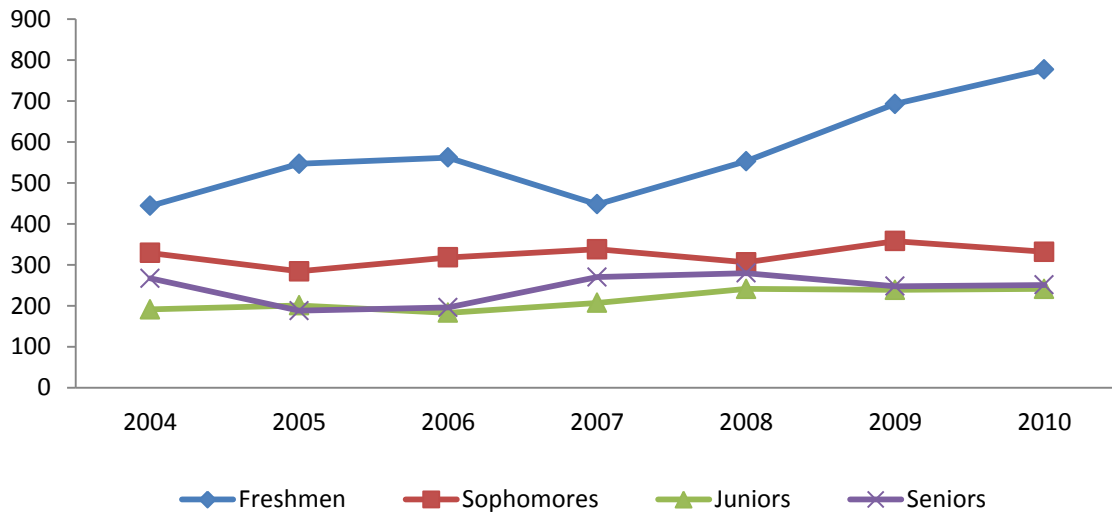
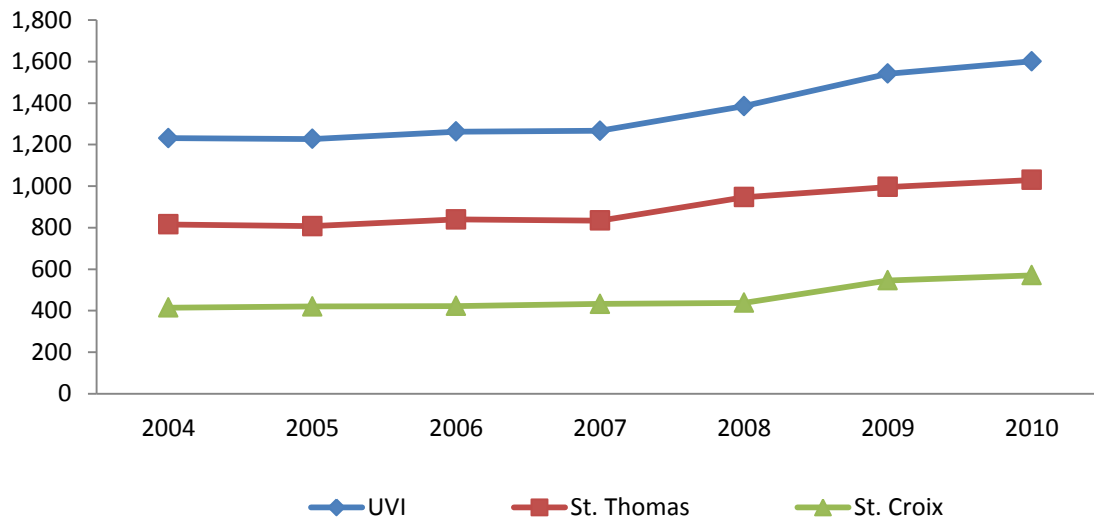


Table 2.6 Full-Time Undergraduate Enrollment by Campus and Percentage Fall 2004-Fall 2010

Fall	Total (UVI)	St. Thomas		St. Croix	
	Count	Count	Percentage	Count	Percentage
2004	1,231	816	66	415	34
2005	1,227	807	66	420	34
2006	1263	840	67	423	33
2007	1267	834	66	433	34
2008	1385	947	68	438	32
2009	1542	996	65	546	35
2010	1601	1030	64	571	36

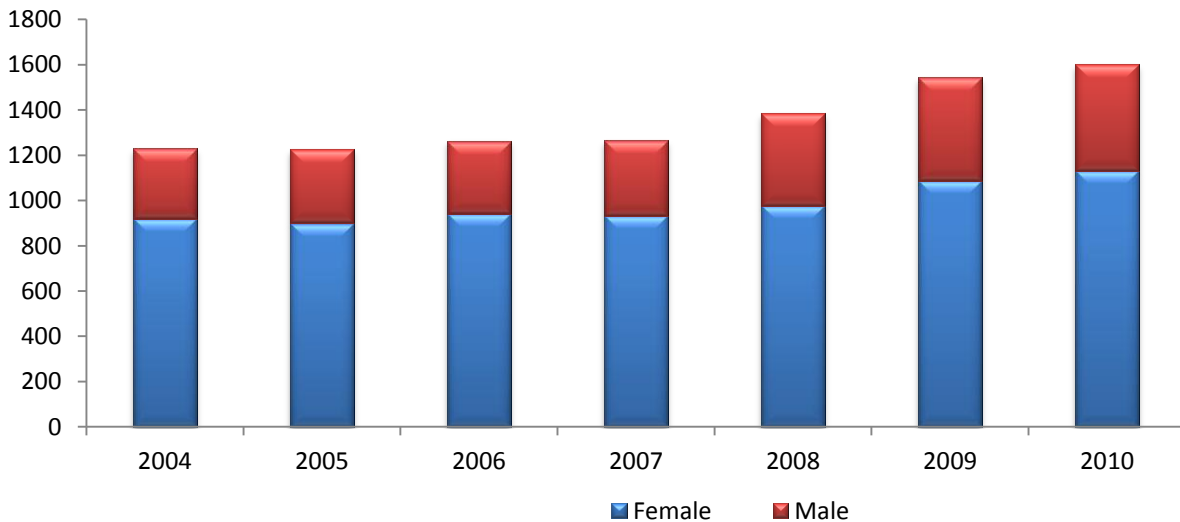
Figure 2.6 Full-Time Undergraduate Enrollment by Campus Fall 2004-2010



**Table 2.7 Full-Time Undergraduate Enrollment by Gender and Percentage
Fall 2004-Fall 2010**

Fall	Total	Female		Male	
	Count	Count	Percentage	Count	Percentage
2004	1,231	922	75	309	25
2005	1,227	901	73	326	27
2006	1,263	941	75	322	25
2007	1,267	933	74	334	26
2008	1,385	977	71	408	29
2009	1,542	1087	70	455	30
2010	1,601	1132	71	469	29

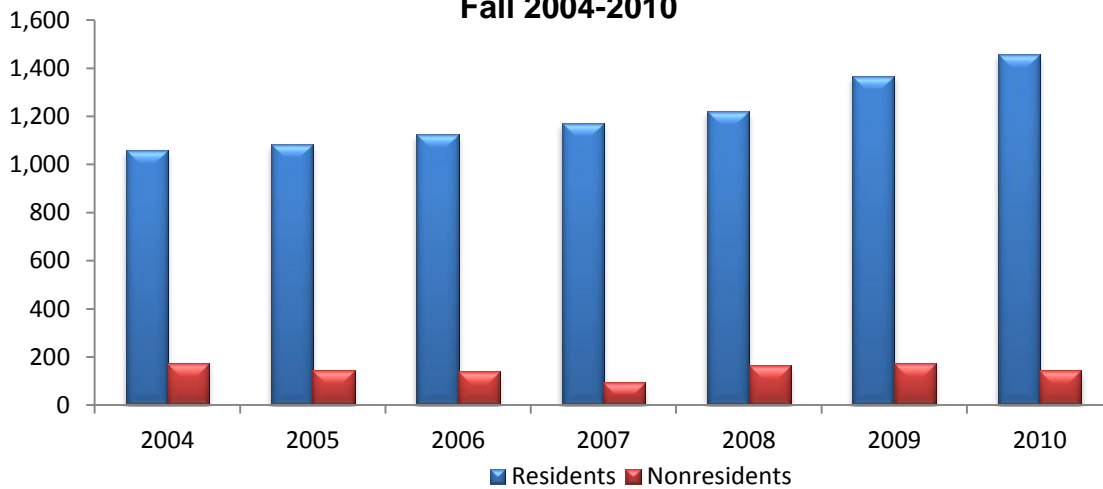
**Figure 2.7 UVI Full-Time Undergraduate Enrollment by Gender
Fall 2004-2010**



**Table 2.8 Full-Time Undergraduate Enrollment by Residency and Percentage
Fall 2004-Fall 2010**

Fall	Total	Residents		Nonresidents	
	Full-time	Count	Percentage	Count	Percentage
2004	1,231	1,057	86	174	14
2005	1,227	1,082	88	145	12
2006	1,263	1,123	89	140	11
2007	1,267	1,172	93	95	7
2008	1,385	1,221	88	164	12
2009	1,542	1,367	89	175	11
2010	1,601	1,456	91	145	9

**Figure 2.8 UVI Full-Time Undergraduate Enrollment by
Residency
Fall 2004-2010**



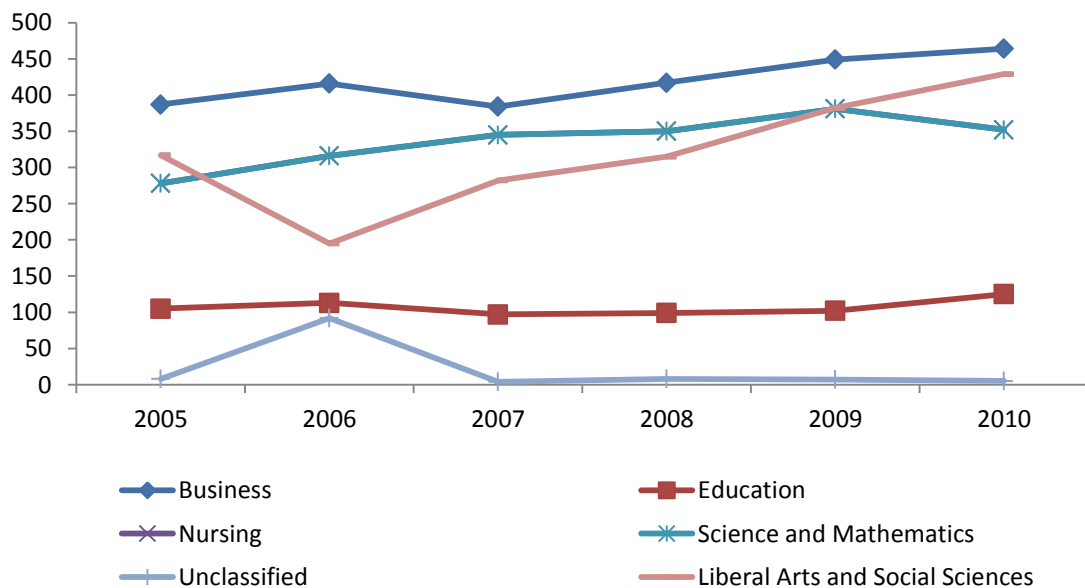
**Table 2.9 Full-Time Undergraduate Enrollment by Division
Fall 2005-Fall 2010**

School/College	2005	2006	2007	2008	2009	2010
Business	387	416	384	417	449	464
Education	105	113	97	99	102	125
Nursing	132	131	155	196	221	226
Science and Mathematics	278	316	345	350	381	352
Liberal Arts and Social Sciences	317	195	282	315	382	429
Unclassified**	8	92	4	8	7	5
Total	1,227	1,263	1,267	1,385	1,542	1,601

* As of Fall 2005, the Social Sciences and Humanities Division have been combined.

** Unclassified includes undecided and no major code assigned.

**2.9 Full-Time Undergraduate Enrollment by Division
Fall 2005-Fall 2010**



**Table 2.10 Full-Time Undergraduate Enrollment by Division and Major
Fall 2004-Fall 2010**

College/School	2004	2005	2006	2007	2008	2009	2010
Business							
Accounting	121	122	119	110	115	116	94
Business Administration	201	202	238	218	257	287	312
Business Management	27	27	27	26	27	21	31
Computer Information Systems	46	32	26	23	17	25	26
Hotel and Restaurant Management	5	3	4	7	1	0	1
Office Assistance/Office Systems	0	1	2	*	*	*	*
Education							
Elementary Education	104	93	89	83	70	69	70
Vocational Education	13	*	*	*	*	*	*
Inclusive Early Childhood Education	0	12	24	14	29	66	29
Pre-Education	*	*	*	*	*	*	26
Liberal Arts and Social Sciences							
Communication	0	10	18	14	25	26	34
Criminal Justice	*	*	*	1	25	60	77
English	21	27	20	28	23	14	15
Humanities	13	11	10	14	6	12	9
Music; Music Education	13	8	10	8	9	17	15
Police Science and Administration	8	11	20	9	11	6	4
Psychology	81	81	74	74	87	96	110
Social Sciences	21	29	25	31	24	22	23
Social Work	7	12	9	12	10	12	9
Speech Communication and Theater	15	4	3	4	2	2	1
Nursing							
Nursing	88	109	112	117	144	148	103
Nursing Education	19	23	19	38	52	73	60
Pre-Nursing	*	*	*	*	*	*	63
Science and Mathematics							
Applied Mathematics	21	24	31	35	39	42	64
Biology	126	94	125	137	130	126	118
Chemistry	16	17	19	21	21	26	22
Computer Science	78	71	60	65	63	80	68
Marine Biology	25	23	30	26	26	22	27
Mathematics	21	18	19	22	20	21	18
Physics	0	1	0	1	1	0	0
Process Technology	21	30	32	38	50	64	35

*Program not offered