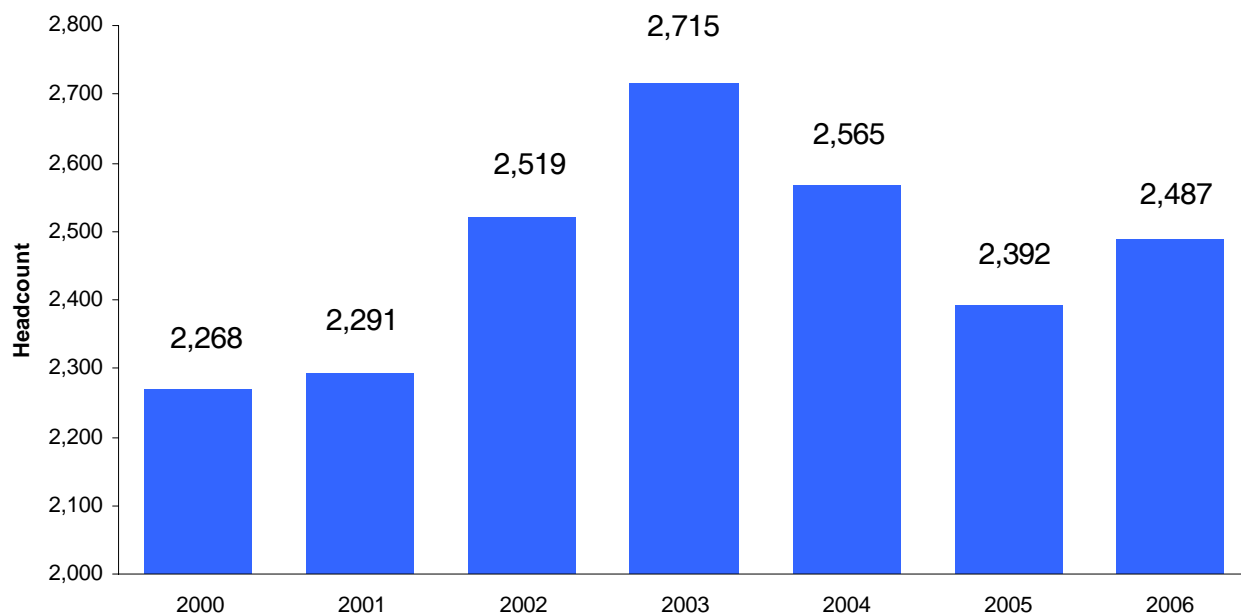


Historical Enrollment

**Table 2.1 Headcount Enrollment by Level and Status
Fall 2000-2006**

Fall	Undergraduates		Graduates	Total
	Full-time	Part-time	Total	Headcount
2000	1,112	1,002	154	2,268
2001	1,101	1,003	187	2,291
2002	1,128	1,110	281	2,519
2003	1,249	1,187	279	2,715
2004	1,231	1,121	213	2,565
2005	1,227	958	207	2,392
2006	1,263	1,009	215	2,487

**Figure 2.1 Total Headcount Enrollment
Fall 2000-2006**

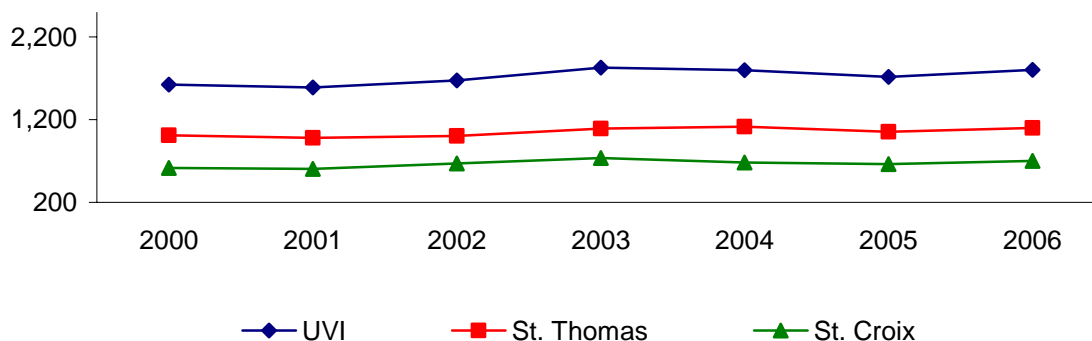


**Table 2.2 Undergraduate Full-Time Equivalent Enrollment (FTE) by Campus
Fall 2000-2006**

Fall	UVI FTE			St. Thomas FTE			St. Croix FTE		
	All	FT *	PT**	All	FT	PT	All	FT	PT
2000	1,625	1,112	513	1,010	726	284	615	386	229
2001	1,588	1,101	487	981	727	254	607	374	233
2002	1,673	1,128	545	1,004	718	286	669	410	259
2003	1,828	1,249	579	1,090	792	298	738	457	281
2004	1,797	1,231	566	1,116	816	300	681	415	266
2005	1,716	1,227	489	1,052	807	245	664	420	244
2006	1,800	1,263	537	1,098	840	258	702	423	279

* Full-time, ** Part-time

**Figure 2.2 Undergraduate Full-Time Equivalent
Fall 2000-2006**

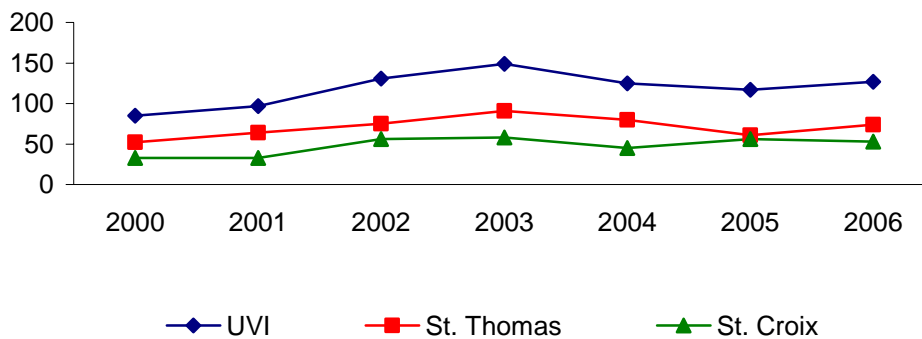


**Table 2.3 Graduate Full-Time Equivalent Enrollment (FTE) by Campus
Fall 2000-2006**

Fall	UVI FTE			St. Thomas FTE			St. Croix FTE		
	All	FT*	PT**	All	FT	PT	All	FT	PT
2000	85	21	64	52	14	38	33	7	26
2001	97	19	78	64	11	53	33	8	25
2002	131	21	110	75	10	65	56	11	45
2003	149	34	115	91	20	71	58	14	44
2004	125	27	98	80	21	59	45	6	39
2005	117	36	81	61	23	38	56	13	43
2006	127	30	97	74	19	55	53	11	42

* Full-time, ** Part-time

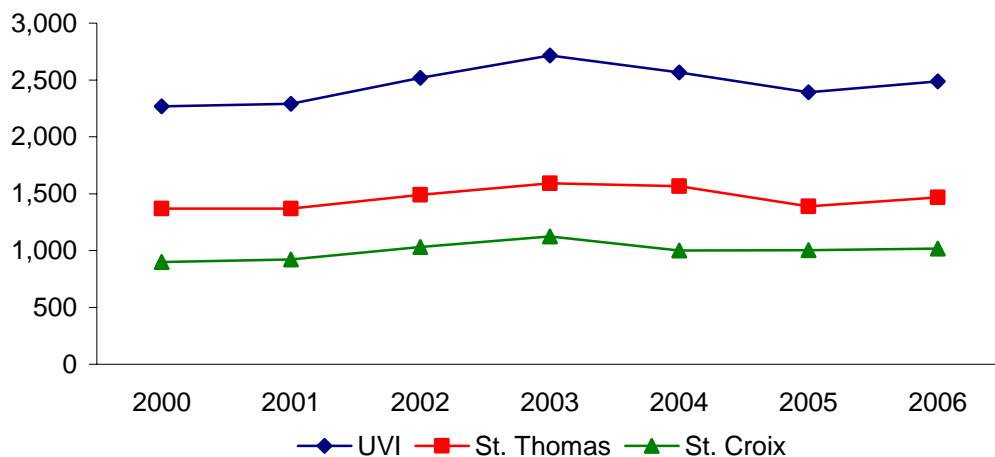
**Figure 2.3 Graduate Full-Time Equivalent
Fall 2000-2006**



**Table 2.4 Headcount Enrollment by Campus
Fall 2000-2006**

Fall	Total (UVI)	St. Thomas		St. Croix	
	Headcount	Headcount	Percent	Headcount	Percent
2000	2,268	1,368	60	900	40
2001	2,291	1,370	60	921	40
2002	2,519	1,489	59	1,030	41
2003	2,715	1,592	59	1,123	41
2004	2,565	1,565	61	1,000	39
2005	2,392	1,388	58	1,004	42
2006	2,487	1,469	59	1,018	41

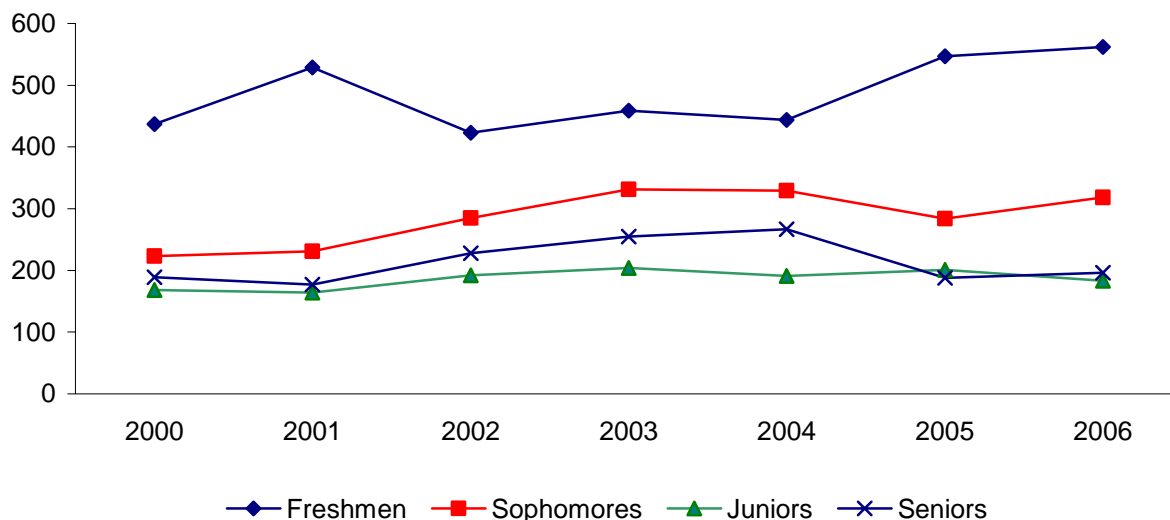
**Figure 2.4 Headcount Enrollment by Campus
Fall 2000-2006**



**Table 2.5 Full-Time Undergraduate Enrollment by Class
Fall 2000-2006**

Fall	Total	Freshmen		Sophomores		Juniors		Seniors		Unclassified	
		Count	Percent	Count	Percent	Count	Percent	Count	Percent	Count	Percent
2000	1,112	437	39	223	20	168	15	189	17	95	9
2001	1,101	529	48	231	21	164	15	177	16	0	0
2002	1,128	423	38	285	25	192	17	228	20	0	0
2003	1,249	459	37	331	27	204	16	255	20	0	0
2004	1,231	444	36	329	27	191	16	267	22	0	0
2005	1,227	547	45	284	23	201	16	188	15	7	1
2006	1,263	562	44	318	25	183	14	196	16	4	0

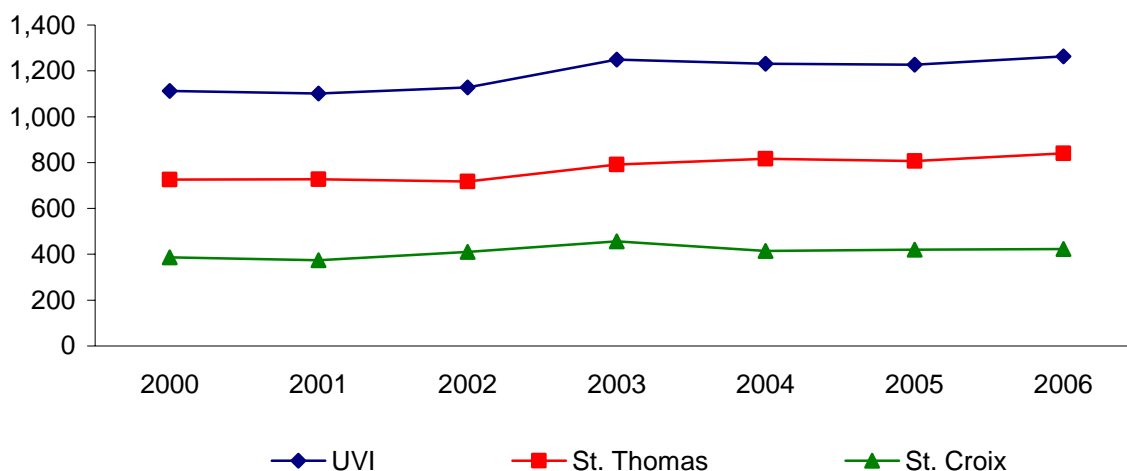
**Figure 2.5 UVI Full-Time Undergraduate Enrollment by Class
Fall 2000-2006**



**Table 2.6 Full-Time Undergraduate Enrollment by Campus
Fall 2000-2006**

Fall	Total (UVI)	St. Thomas		St. Croix	
	Count	Count	Percent	Count	Percent
2000	1,112	726	65	386	35
2001	1,101	727	66	374	34
2002	1,128	718	64	410	36
2003	1,249	792	63	457	37
2004	1,231	816	66	415	34
2005	1,227	807	66	420	34
2006	1263	840	67	423	33

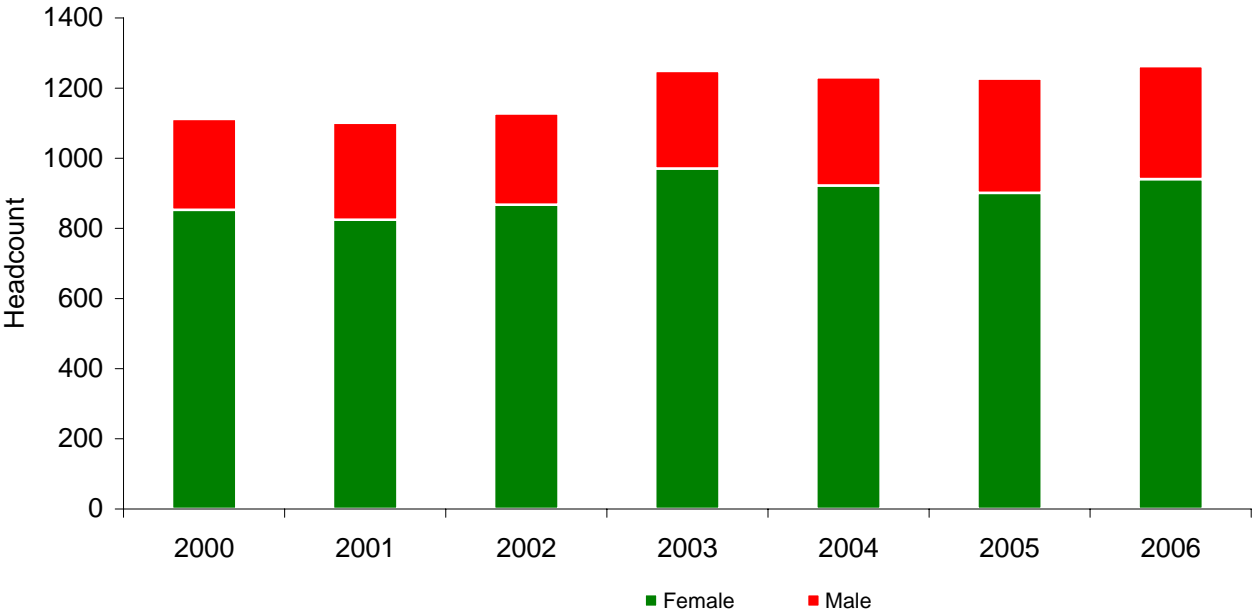
**Figure 2.6 Full-Time Undergraduate Enrollment by Campus
Fall 2000-2006**



**Table 2.7 Full-Time Undergraduate Enrollment by Gender
Fall 2000-2006**

Fall	Total	Female		Male	
	Count	Count	Percent	Count	Percent
2000	1,112	853	77	259	23
2001	1,101	825	75	276	25
2002	1,128	868	77	260	23
2003	1,249	971	78	278	22
2004	1,231	922	75	309	25
2005	1,227	901	73	326	27
2006	1,263	941	75	322	25

**Figure 2.7 UVI Full-Time Undergraduate Enrollment by Gender
Fall 2000-2006**



**Table 2.8 Full-Time Undergraduate Enrollment by Residency
Fall 2000-2006**

Fall	Total Full-time	Residents		Nonresidents	
		Count	Percent	Count	Percent
2000	1112	962	87	150	13
2001	1101	958	87	143	13
2002	1128	1020	90	108	10
2003	1249	1143	92	106	8
2004	1231	1057	86	174	14
2005	1227	1082	88	145	12
2006	1263	1123	89	140	11

**Figure 2.8 UVI Full-Time Undergraduate Enrollment by Residency
Fall 2000-2006**



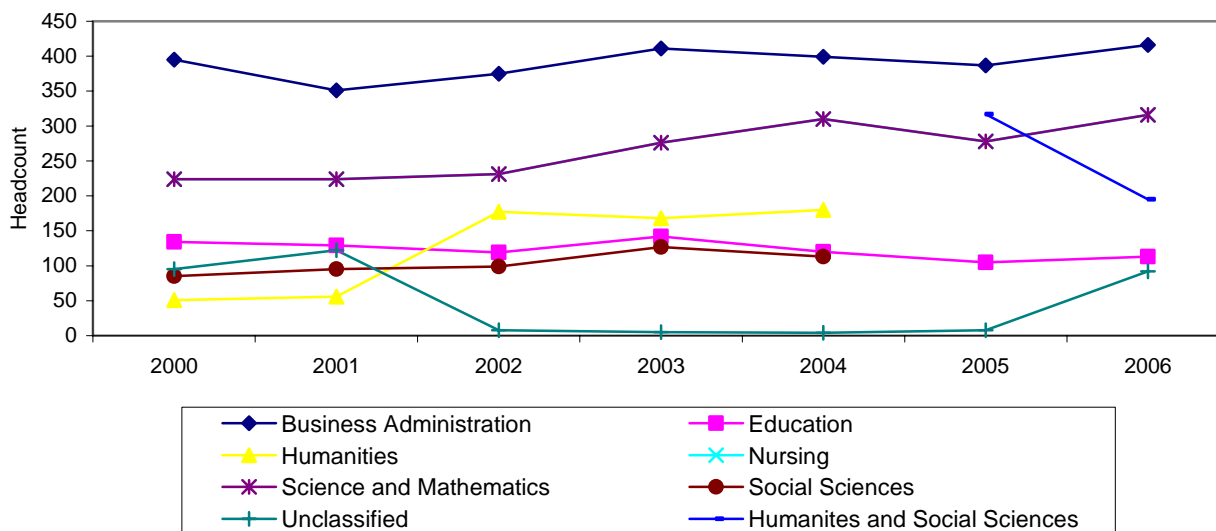
**Table 2.9 Full-Time Undergraduate Enrollment by Division
Fall 2000-2006**

Division	2000	2001	2002	2003	2004	2005	2006
Business Administration	395	351	375	411	399	387	416
Education	134	129	119	142	120	105	113
Humanities*	51	56	177	168	180	–	–
Nursing	128	124	119	120	105	132	131
Science and Mathematics	224	224	231	276	310	278	316
Social Sciences	85	95	99	127	113	–	–
Humanities and Social Sciences*	–	–	–	–	–	317	195
Unclassified**	95	122	8	5	4	8	92
Total	1112	1101	1128	1249	1,231	1,227	1,263

* As of Fall 2005 the Social Sciences and Humanities Division have been combined.

** Unclassified includes undecided and no major code assigned.

**Figure 2.9 UVI Full-Time Undergraduate Enrollment
by Division:
Fall 2000-2006**



**Table 2.10 Full-Time Undergraduate Enrollment by Division and Major
Fall 2002-2006**

Division/Major	2002	2003	2004	2005	2006
BUSINESS ADMINISTRATION					
Accounting	98	111	121	122	119
Business Administration	199	214	201	202	238
Business Management	28	34	27	27	27
Data Processing/Computer Info. System	43	46	46	32	26
Hotel and Restaurant Management	10	7	5	3	4
Office Assistance/Office Systems	0	2	0	1	2
EDUCATION					
Early Childhood Education	1	0	0	12	10
Elementary Education	113	129	104	93	89
Vocational Education	4	6	13	0	0
Inclusive early Childhood Education	0	0	0	0	14
HUMANITIES/SOCIAL SCIENCES					
Communication	0	0	0	10	18
English	15	24	21	27	20
Humanities	12	20	13	11	10
Music; Music Education	6	12	13	8	10
Police Science and Administration	13	11	8	11	20
Psychology	68	86	81	81	74
Social Sciences	18	25	21	29	25
Social Work	0	3	7	12	9
Spanish	1	0	0	1	0
Speech Comm. and Theater	9	14	15	4	3
Undecided	131	103	111	125	0
NURSING					
Nursing	98	103	88	109	112
Nursing Education	21	19	19	23	19
SCIENCE AND MATH					
Applied Mathematics	0	3	4	6	11
Biology	103	110	126	94	125
Chemistry	11	15	16	17	19
Chemistry with Physics	0	0	0	0	0
Computer Science	60	71	78	71	60
Engineering	14	19	17	18	20
Marine Biology	21	22	25	23	30
Mathematics, Mathematics/Secondary Education	10	13	21	18	19
Physics	2	2	0	1	0
Processed Technology	9	18	21	30	32
undecided	0	1	4	0	0
Unclassified	9	5	4	8	92