

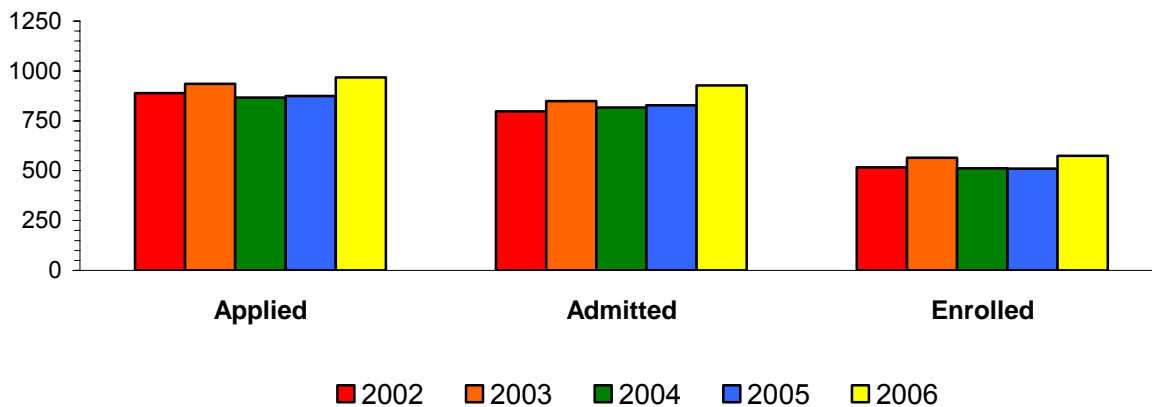
Admissions

**Table 3.1 UVI Admissions Data Comparisons
Applications vs. Admissions vs. Enrollment
Fall 2002-2006**

Admission by Student Type	2002	2003	2004	2005	2006
New Freshmen					
Gross Number of Applicants	718	760	736	798	788
Net Number of Applicants*	593	609	591	598	632
Number Admitted	504	554	565	579	615
Percent of Net Applicants Admitted (%)	85	91	96	97	97
Number Enrolled	314	373	359	360	385
Percent of Admitted Enrolled (%)	62	67	64	62	63
New Transfer					
Gross Number of Applicants	204	222	217	202	256
Net Number of Applicants*	167	172	172	153	209
Number Admitted	144	154	157	136	195
Percent of Net Applicants Admitted (%)	86	90	91	89	93
Number Enrolled	72	89	90	62	89
Percent of Admitted Enrolled (%)	50	58	57	46	46
All Other					
Gross Number of Applicants	214	183	118	142	161
Net Number of Applicants*	171	155	103	124	127
Number Admitted	150	141	95	113	118
Percent of Net Applicants Admitted (%)	88	91	92	91	93
Number Enrolled	130	103	69	88	100
Percent of Admitted Enrolled (%)	87	73	73	78	85
All Students					
Gross Number of Applicants	1136	1165	1071	1142	1205
Net Number of Applicants*	889	936	867	875	968
Number Admitted	798	849	817	828	928
Percent of Net Applicants Admitted (%)	90	91	94	95	96
Number Enrolled	516	565	512	510	574
Percent of Admitted Enrolled (%)	65	67	63	62	62

*Represents the number of completed applications.

**Figure 3.1 New Student Admissions Data Comparisons
2002-2006**

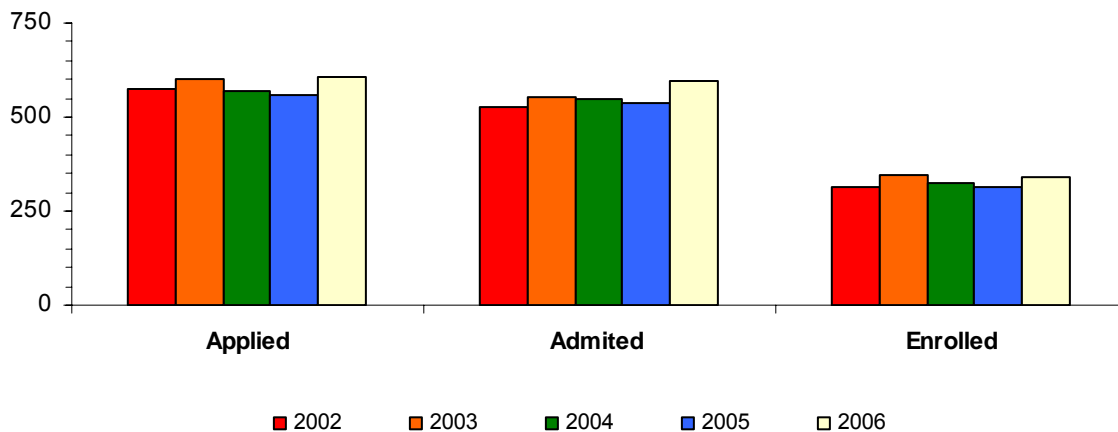


**Table 3.2 St. Thomas Admissions Data Comparisons
Applications vs. Admissions vs. Enrollment
Fall 2002-2006**

Admission by Student Type	2002	2003	2004	2005	2006
New Freshmen					
Gross Number of Applicants	455	496	492	492	474
Net Number of Applicants*	361	390	398	377	395
Number Admitted	332	357	386	370	390
Percent of Net Applicants Admitted (%)	92	92	97	98	99
Number Enrolled	184	221	228	219	228
Percent of Admitted Enrolled (%)	55	62	59	59	58
New Transfer					
Gross Number of Applicants	150	144	135	146	175
Net Number of Applicants*	121	112	102	111	142
Number Admitted	106	100	98	101	136
Percent of Net Applicants Admitted (%)	88	89	96	91	96
Number Enrolled	52	55	53	45	59
Percent of Admitted Enrolled (%)	49	55	54	45	43
All Other					
Gross Number of Applicants	121	120	80	79	85
Net Number of Applicants*	91	98	69	72	72
Number Admitted	87	94	63	68	69
Percent of Net Applicants Admitted (%)	96	96	91	94	96
Number Enrolled	78	68	46	51	55
Percent of Admitted Enrolled (%)	90	72	73	75	80
All					
Gross Number of Applicants	726	760	707	717	734
Net Number of Applicants*	573	600	569	560	609
Number Admitted	525	551	547	539	595
Percent of Net Applicants Admitted (%)	92	92	96	96	98
Number Enrolled	314	344	327	315	342
Percent of Admitted Enrolled (%)	60	62	60	58	57

*Represents the number of completed applications.

**Figure 3.2 St. Thomas Admissions Data Comparisons
2002-2006**

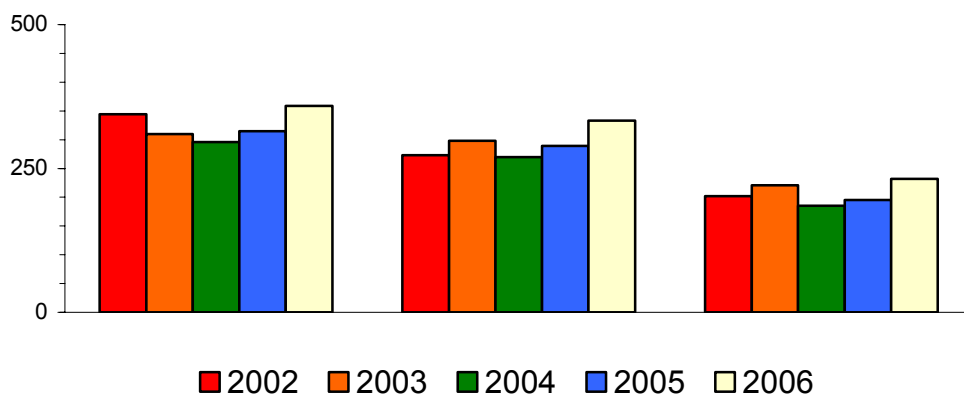


**Table 3.3 St. Croix Admissions Data Comparisons
Applications vs. Admissions vs. Enrollment
Fall 2002-2006**

Admission by Student Type	2002	2003	2004	2005	2006
New Freshmen					
Gross Number of Applicants	263	289	244	306	314
Net Number of Applicants*	212	216	199	221	237
Number Admitted	172	197	179	209	225
Percent of Net Applicants Admitted (%)	81	91	90	95	95
Number Enrolled	130	152	131	141	157
Percent of Admitted Enrolled (%)	76	77	73	67	70
New Transfer					
Gross Number of Applicants	54	78	82	56	81
Net Number of Applicants*	41	70	64	42	67
Number Admitted	38	54	59	35	59
Percent of Net Applicants Admitted (%)	93	77	92	83	88
Number Enrolled	20	34	35	17	30
Percent of Admitted Enrolled (%)	53	63	59	49	51
All Other					
Gross Number of Applicants	93	62	38	63	76
Net Number of Applicants*	91	49	33	52	55
Number Admitted	63	47	32	45	49
Percent of Net Applicants Admitted (%)	69	96	97	87	89
Number Enrolled	50	35	19	37	45
Percent of Admitted Enrolled (%)	79	74	59	82	92
All					
Gross Number of Applicants	410	404	364	425	471
Net Number of Applicants*	344	310	296	315	359
Number Admitted	273	298	270	289	333
Percent of Net Applicants Admitted (%)	79	96	91	92	93
Number Enrolled	202	221	185	195	232
Percent of Admitted Enrolled (%)	74	74	69	67	70

*Represents the number of completed applications.

**Figure 3.3 St. Croix Admissions Data Comparisons
2002-2006**



**Table 3.4 UVI Admissions Data Comparisons
Applications vs. Admissions vs. Enrollment by Gender and Region
Fall 2003-2004**

Admission / Gender	2003			2004		
	Caribbean	USA	USVI	Caribbean	USA	USVI
Female						
Gross number of Applicants	66	120	657	53	133	585
Number of Applicants	53	87	549	43	92	496
Number Admitted	46	86	494	41	89	464
Percent of Applied Admitted (%)	87	99	90	95	97	94
Number Enrolled	19	28	368	22	25	327
Percent of Admitted Enrolled (%)	41	33	74	54	28	70
Male						
Gross Number of Applicants	25	55	242	29	72	199
Number of Applicants	15	36	196	11	54	171
Number Admitted	11	32	179	11	52	160
Percent of Applied Admitted (%)	73	89	91	100	96	94
Number Enrolled	6	15	129	6	16	116
Percent of Admitted Enrolled (%)	55	47	72	55	31	73
All						
Gross Number of Applicants	91	175	899	82	205	784
Number of Applicants	68	123	745	54	146	667
Number Admitted	57	118	673	52	141	624
Percent of Applied Admitted (%)	84	96	90	96	97	94
Number Enrolled	25	43	497	28	41	443
Percent of Admitted Enrolled (%)	44	36	74	54	29	71

Continued → ≡

**Table 3.4 UVI Admissions Data Comparisons
Applications vs. Admissions vs. Enrollment
Fall 2005-2006**

Admission / Gender	2005			2006		
	Caribbean	USA	USVI	Caribbean	USA	USVI
Female						
Gross Number of Applicants	41	160	608	66	129	669
Net Number of Applicants	29	103	492	51	90	554
Number Admitted	26	99	468	47	87	527
Percent of Applied Admitted (%)	90	96	95	92	97	95
Number Enrolled	8	40	313	15	27	370
Percent of Admitted Enrolled (%)	31	40	67	32	31	70
Male						
Gross Number of Applicants	14	92	227	19	80	242
Net Number of Applicants	8	63	180	14	56	203
Number Admitted	8	61	169	14	55	198
Percent of Applied Admitted (%)	100	97	94	100	98	98
Number Enrolled	3	25	116	2	16	144
Percent of Admitted Enrolled (%)	38	41	69	14	29	73
All						
Gross Number of Applicants	55	252	835	85	209	911
Net Number of Applicants	37	166	672	65	146	757
Number Admitted	34	160	637	61	142	725
Percent of Applied Admitted (%)	92	96	95	94	97	96
Number Enrolled	11	65	429	17	43	514
Percent of Admitted Enrolled (%)	32	41	67	28	30	71