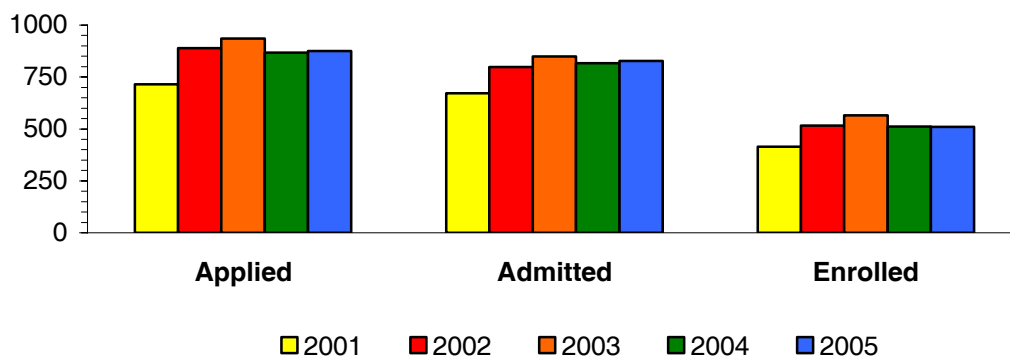


**Table 3.1 UVI Admissions Data Comparisons  
Applications vs. Admissions vs. Enrollment  
Fall 2001-2005**

<b>Admission by Student Type</b>	<b>2001</b>	<b>2002</b>	<b>2003</b>	<b>2004</b>	<b>2005</b>
<b>New Freshmen</b>					
Gross Number of Applicants	611	718	760	736	798
Net Number of Applicants*	473	593	609	591	598
Number Admitted	456	504	554	565	579
Percent of Net Applicants Admitted (%)	96	85	91	96	97
Number Enrolled	292	314	373	359	360
Percent of Admitted Enrolled (%)	64	62	67	64	62
<b>New Transfer</b>					
Gross Number of Applicants	165	204	222	217	202
Net Number of Applicants*	129	167	172	172	153
Number Admitted	118	144	154	157	136
Percent of Net Applicants Admitted (%)	91	86	90	91	89
Number Enrolled	59	72	89	90	62
Percent of Admitted Enrolled (%)	50	50	58	57	46
<b>All Other</b>					
Gross Number of Applicants	157	214	183	118	142
Net Number of Applicants*	113	171	155	103	124
Number Admitted	98	150	141	95	113
Percent of Net Applicants Admitted (%)	87	88	91	92	91
Number Enrolled	64	130	103	69	88
Percent of Admitted Enrolled (%)	65	87	73	73	78
<b>All Students</b>					
Gross Number of Applicants	933	1136	1165	1071	1142
Net Number of Applicants*	715	889	936	867	875
Number Admitted	672	798	849	817	828
Percent of Net Applicants Admitted (%)	94	90	91	94	95
Number Enrolled	415	516	565	512	510
Percent of Admitted Enrolled (%)	62	65	67	63	62

\*Represents the number of completed applications.

**Figure 3.1 Student Admissions Data Comparisons  
Fall 2001-2005**

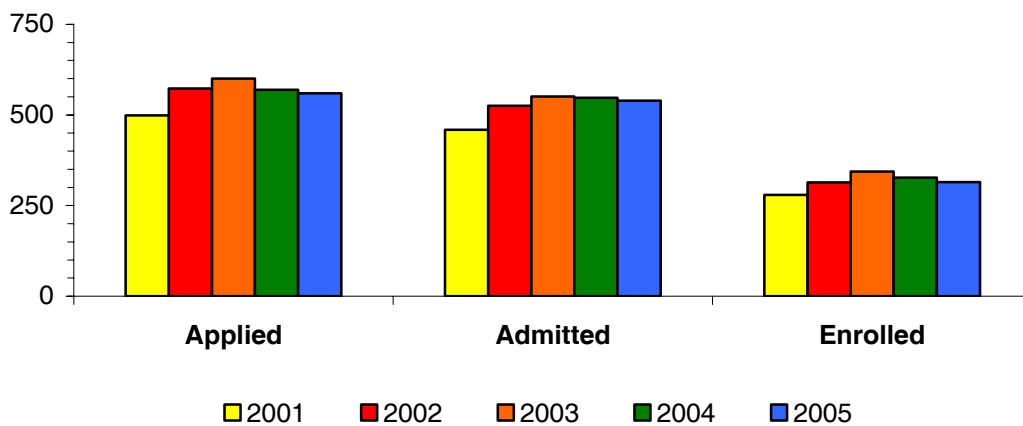


**Table 3.2 St. Thomas Admissions Data Comparisons  
Applications vs. Admissions vs. Enrollment  
Fall 2001-2005**

<b>Admission by Student Type</b>	<b>2001</b>	<b>2002</b>	<b>2003</b>	<b>2004</b>	<b>2005</b>
<b>New Freshmen</b>					
Gross Number of Applicants	415	455	496	492	492
Net Number of Applicants*	315	361	390	398	377
Number Admitted	300	332	357	386	370
Percent of Net Applicants Admitted (%)	95	92	92	97	98
Number Enrolled	192	184	221	228	219
Percent of Admitted Enrolled (%)	64	55	62	59	59
<b>New Transfer</b>					
Gross Number of Applicants	130	150	144	135	146
Net Number of Applicants*	99	121	112	102	111
Number Admitted	88	106	100	98	101
Percent of Net Applicants Admitted (%)	89	88	89	96	91
Number Enrolled	38	52	55	53	45
Percent of Admitted Enrolled (%)	43	49	55	54	45
<b>All Other</b>					
Gross Number of Applicants	116	121	120	80	79
Net Number of Applicants*	85	91	98	69	72
Number Admitted	71	87	94	63	68
Percent of Net Applicants Admitted (%)	84	96	96	91	94
Number Enrolled	49	78	68	46	51
Percent of Admitted Enrolled (%)	69	90	72	73	75
<b>All</b>					
Gross Number of Applicants	661	726	760	707	717
Net Number of Applicants*	499	573	600	569	560
Number Admitted	459	525	551	547	539
Percent of Net Applicants Admitted (%)	92	92	92	96	96
Number Enrolled	279	314	344	327	315
Percent of Admitted Enrolled (%)	61	60	62	60	58

\*Represents the number of completed applications.

**Figure 3.2 St. Thomas Admissions Data Comparisons  
Fall 2001-2005**

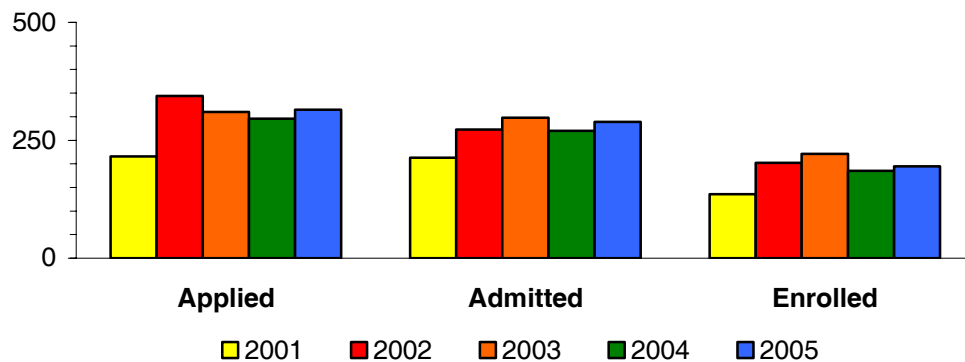


**Table 3.3 St. Croix Admissions Data Comparisons  
Applications vs. Admissions vs. Enrollment  
Fall 2001-2005**

<b>Admission by Student Type</b>	<b>2001</b>	<b>2002</b>	<b>2003</b>	<b>2004</b>	<b>2005</b>
<b>New Freshmen</b>					
Gross Number of Applicants	196	263	289	244	306
Net Number of Applicants*	158	212	216	199	221
Number Admitted	156	172	197	179	209
Percent of Net Applicants Admitted (%)	99	81	91	90	95
Number Enrolled	100	130	152	131	141
Percent of Admitted Enrolled (%)	64	76	77	73	67
<b>New Transfer</b>					
Gross Number of Applicants	35	54	78	82	56
Net Number of Applicants*	30	41	70	64	42
Number Admitted	30	38	54	59	35
Percent of Net Applicants Admitted (%)	100	93	77	92	83
Number Enrolled	21	20	34	35	17
Percent of Admitted Enrolled (%)	70	53	63	59	49
<b>All Other</b>					
Gross Number of Applicants	41	93	62	38	63
Net Number of Applicants*	28	91	49	33	52
Number Admitted	27	63	47	32	45
Percent of Net Applicants Admitted (%)	96	69	96	97	87
Number Enrolled	15	50	35	19	37
Percent of Admitted Enrolled (%)	56	79	74	59	82
<b>All</b>					
Gross Number of Applicants	272	410	404	364	425
Net Number of Applicants*	216	344	310	296	315
Number Admitted	213	273	298	270	289
Percent of Net Applicants Admitted (%)	99	79	96	91	92
Number Enrolled	136	202	221	185	195
Percent of Admitted Enrolled (%)	64	74	74	69	67

\*Represents the number of completed applications.

**Figure 3.3 St. Croix Admissions Data Comparisons  
Fall 2001-2005**



**Table 3.4 UVI Admissions Data Comparisons  
Applications vs. Admissions vs. Enrollment by Gender and Region  
Fall 2002-2005**

Admission / Gender	2002			2003		
	Caribbean	USA	USVI	Caribbean	USA	USVI
<b>Female</b>						
Gross number of Applicants	45	97	717	66	120	657
Number of Applicants	33	63	585	53	87	549
Number Admitted	27	61	520	46	86	494
Percent of Applied Admitted (%)	82	97	89	87	99	90
Number Enrolled	8	23	380	19	28	368
Percent of Admitted Enrolled (%)	30	38	73	41	33	74
<b>Male</b>						
Gross Number of Applicants	18	73	186	25	55	242
Number of Applicants	7	51	150	15	36	196
Number Admitted	6	48	136	11	32	179
Percent of Applied Admitted (%)	86	94	91	73	89	91
Number Enrolled	2	17	86	6	15	129
Percent of Admitted Enrolled (%)	33	35	63	55	47	72
<b>All</b>						
Gross Number of Applicants	63	170	903	91	175	899
Number of Applicants	40	114	735	68	123	745
Number Admitted	33	109	656	57	118	673
Percent of Applied Admitted (%)	83	96	89	84	96	90
Number Enrolled	10	40	466	25	43	497
Percent of Admitted Enrolled (%)	30	37	71	44	36	74

Continued → ≡

**Table 3.4 UVI Admissions Data Comparisons  
Applications vs. Admissions vs. Enrollment  
Fall 2002-2005**

Admission / Gender	2004			2005		
	Caribbean	USA	USVI	Caribbean	USA	USVI
<b>Female</b>						
Gross Number of Applicants	53	133	585	41	160	608
Net Number of Applicants	43	92	496	29	103	492
Number Admitted	41	89	464	26	99	468
Percent of Applied Admitted (%)	95	97	94	90	96	95
Number Enrolled	22	25	327	8	40	313
Percent of Admitted Enrolled (%)	54	28	70	31	40	67
<b>Male</b>						
Gross Number of Applicants	29	72	199	14	92	227
Net Number of Applicants	11	54	171	8	63	180
Number Admitted	11	52	160	8	61	169
Percent of Applied Admitted (%)	100	96	94	100	97	94
Number Enrolled	6	16	116	3	25	116
Percent of Admitted Enrolled (%)	55	31	73	38	41	69
<b>All</b>						
Gross Number of Applicants	82	205	784	55	252	835
Net Number of Applicants	54	146	667	37	166	672
Number Admitted	52	141	624	34	160	637
Percent of Applied Admitted (%)	96	97	94	92	96	95
Number Enrolled	28	41	443	11	65	429
Percent of Admitted Enrolled (%)	54	29	71	32	41	67