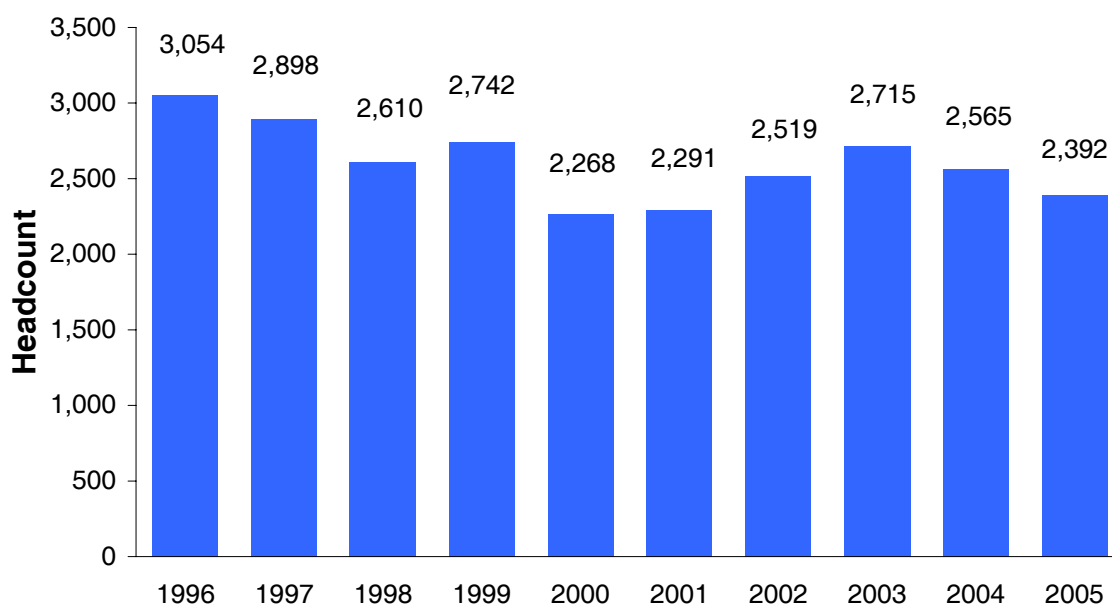


**Table 2.1 Headcount Enrollment by Level and Status
Fall 1996-2005**

Fall	Undergraduates		Graduates	Total
	Full-time	Part-time	Total	Headcount
1996	1,359	1,418	277	3,054
1997	1,302	1,364	232	2,898
1998	1,189	1,210	211	2,610
1999	1,259	1,280	203	2,742
2000	1,112	1,002	154	2,268
2001	1,101	1,003	187	2,291
2002	1,128	1,110	281	2,519
2003	1,249	1,187	279	2,715
2004	1,231	1,121	213	2,565
2005	1,227	958	207	2,392

**Figure 2.1 Total Headcount Enrollment
Fall 1996-2005**

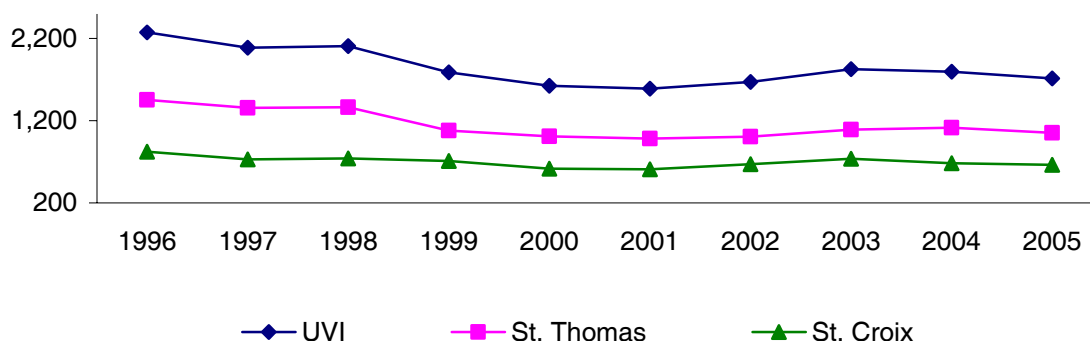


**Table 2.2 Undergraduate Full-Time Equivalent Enrollment (FTE) by Campus
Fall 1996-2005**

Fall	UVI FTE			St. Thomas FTE			St. Croix FTE		
	All	FT *	PT**	All	FT	PT	All	FT	PT
1996	2,274	1,589	685	1,453	1,084	369	821	505	316
1997	2,086	1,468	618	1,355	1,011	344	731	457	273
1998	2,105	1,502	603	1,363	1,034	330	742	468	274
1999	1,788	1,259	529	1,079	791	288	709	468	241
2000	1,625	1,112	513	1,010	726	284	615	386	229
2001	1,588	1,101	487	981	727	254	607	374	233
2002	1,673	1,128	545	1,004	718	286	669	410	259
2003	1,828	1,249	579	1,090	792	298	738	457	281
2004	1,797	1,231	566	1,116	816	300	681	415	266
2005	1,716	1,227	489	1,052	807	245	664	420	244

* Full-time, ** Part-time

**Figure 2.2 Undergraduate FTE by Campus
Fall 1996-2005**

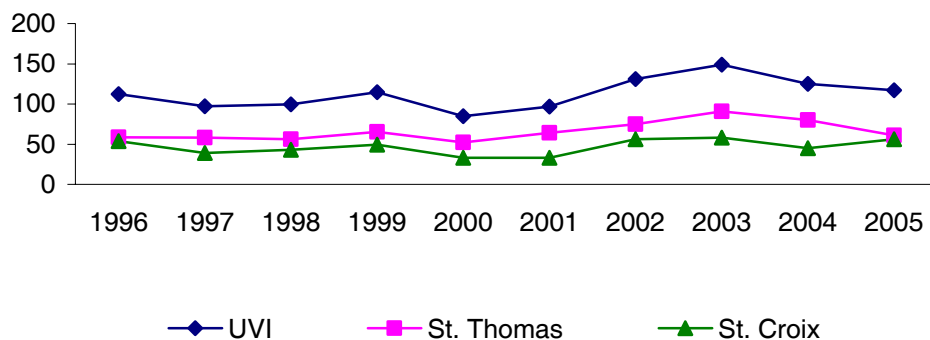


**Table 2.3 Graduate Full-Time Equivalent Enrollment (FTE) by Campus
Fall 1996-2005**

Fall	UVI FTE			St. Thomas FTE			St. Croix FTE		
	All	FT*	PT**	All	FT	PT	All	FT	PT
1996	112	29	83	59	17	42	54	12	42
1997	97	25	72	58	16	43	39	10	29
1998	100	30	69	56	17	39	43	13	30
1999	115	28	87	65	22	43	50	6	44
2000	85	21	64	52	14	38	33	7	26
2001	97	19	78	64	11	53	33	8	25
2002	131	21	110	75	10	65	56	11	45
2003	149	34	115	91	20	71	58	14	44
2004	125	27	98	80	21	59	45	6	39
2005	117	36	81	61	23	38	56	13	43

* Full-time, ** Part-time

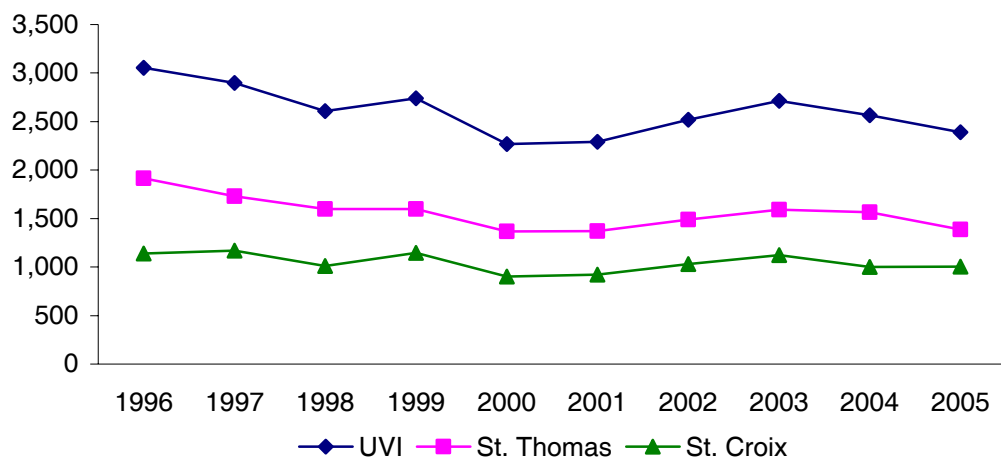
**Figure 2.3 Graduate FTE by Campus
Fall 1996-2005**



**Table 2.4 Headcount Enrollment by Campus
Fall 1996-2005**

Fall	Total (UVI)	St. Thomas		St. Croix	
	Headcount	Headcount	Percent	Headcount	Percent
1996	3,054	1,916	63	1,138	37
1997	2,898	1,730	60	1,168	40
1998	2,610	1,598	61	1,012	39
1999	2,742	1,597	58	1,145	42
2000	2,268	1,368	60	900	40
2001	2,291	1,370	60	921	40
2002	2,519	1489	59	1030	41
2003	2,715	1592	59	1123	41
2004	2,565	1565	61	1000	39
2005	2,392	1388	58	1004	42

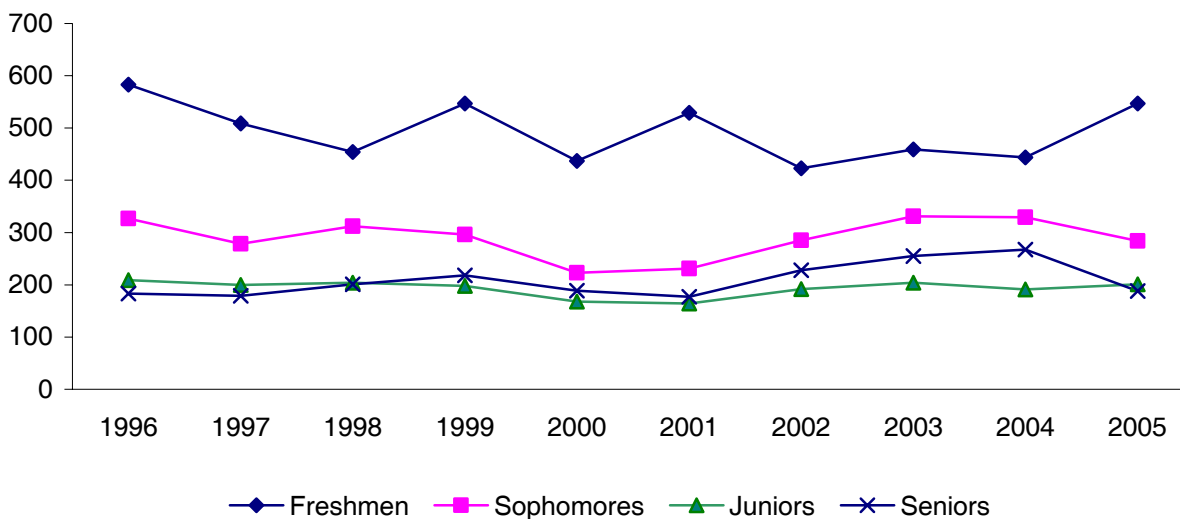
**Figure 2.4 Headcount Enrollment by Campus
Fall 1996-2005**



**Table 2.5 Full-Time Undergraduate Enrollment by Class
Fall 1996-2006**

Fall	Total	Freshmen		Sophomores		Juniors		Seniors		Unclassified	
		Count	Percent	Count	Percent	Count	Percent	Count	Percent	Count	Percent
1996	1,302	583	45	327	25	209	16	183	14	0	0
1997	1,166	509	44	278	24	200	17	179	15	23	53
1998	1,193	454	38	312	26	204	17	201	17	22	2
1999	1,259	547	43	296	24	198	16	218	17	0	0
2000	1,112	437	39	223	20	168	15	189	17	95	9
2001	1,101	529	48	231	21	164	15	177	16	0	0
2002	1,128	423	38	285	25	192	17	228	20	0	0
2003	1,249	459	37	331	27	204	16	255	20	0	0
2004	1,231	444	36	329	27	191	16	267	22	0	0
2005	1,227	547	45	284	23	201	16	188	15	7	1

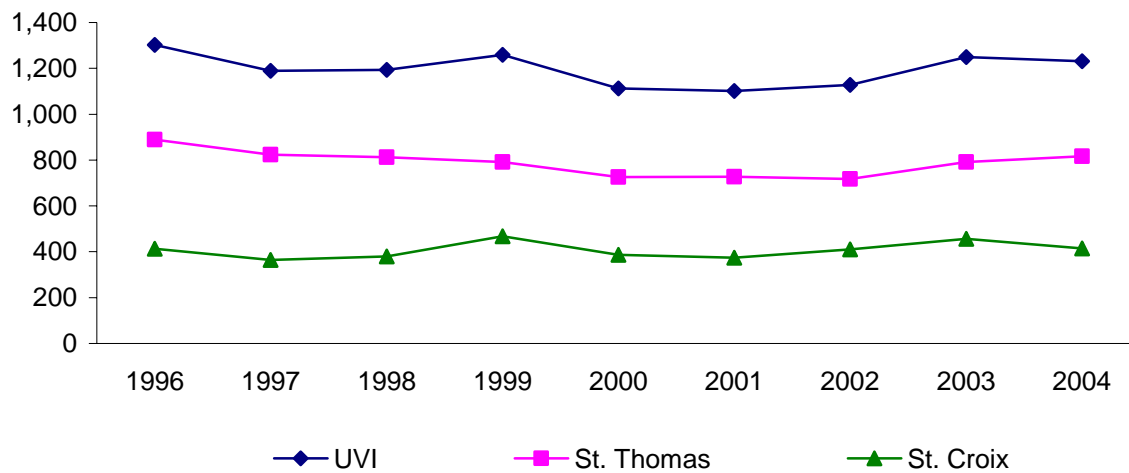
**Figure 2.5 Full-Time Undergraduate Enrollment by Class
Fall 1996-2005**



**Table 2.6 Full-Time Undergraduate Enrollment by Campus
Fall 1996-2005**

Fall	Total (UVI)	St. Thomas		St. Croix	
	Count	Count	Percent	Count	Percent
1996	1,302	889	68	413	32
1997	1,189	824	69	365	31
1998	1,193	813	68	380	32
1999	1,259	791	63	468	37
2000	1,112	726	65	386	35
2001	1,101	727	66	374	34
2002	1,128	718	64	410	36
2003	1,249	792	63	457	37
2004	1,231	816	66	415	34
2005	1,227	807	66	420	34

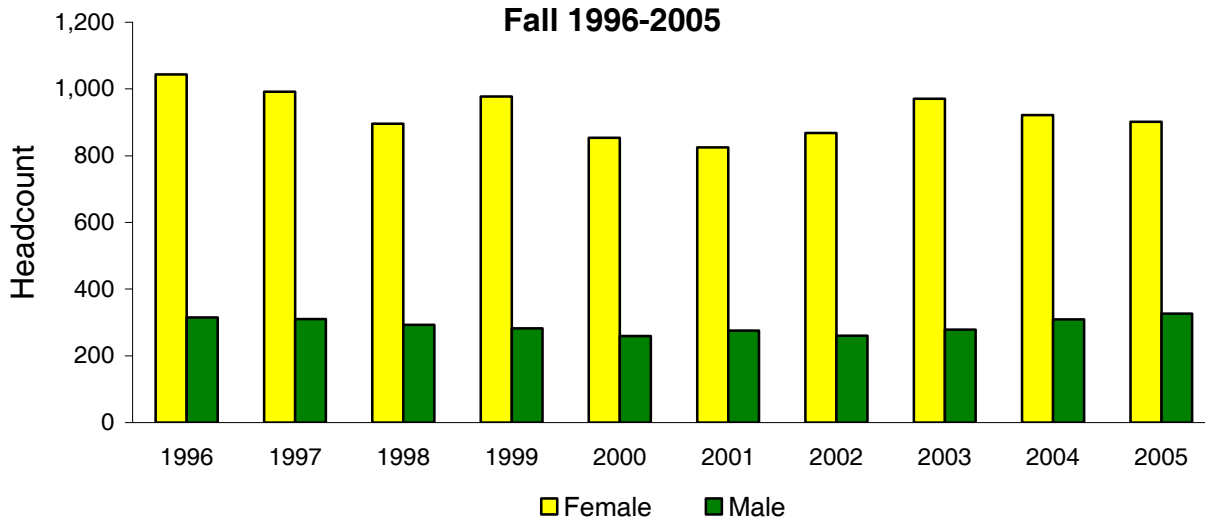
**Figure 2.6 Full-Time Undergraduate Enrollment by Campus
Fall 1996-2005**



**Table 2.7 Full-Time Undergraduate Enrollment by Gender
Fall 1996-2005**

Fall	Total	Female		Male	
	Count	Count	Percent	Count	Percent
1996	1,359	1,044	77	315	23
1997	1,302	992	76	310	24
1998	1,189	896	75	293	25
1999	1,259	977	78	282	22
2000	1,112	853	77	259	23
2001	1,101	825	75	276	25
2002	1,128	868	77	260	23
2003	1,249	971	78	278	22
2004	1,231	922	75	309	25
2005	1,227	901	73	326	27

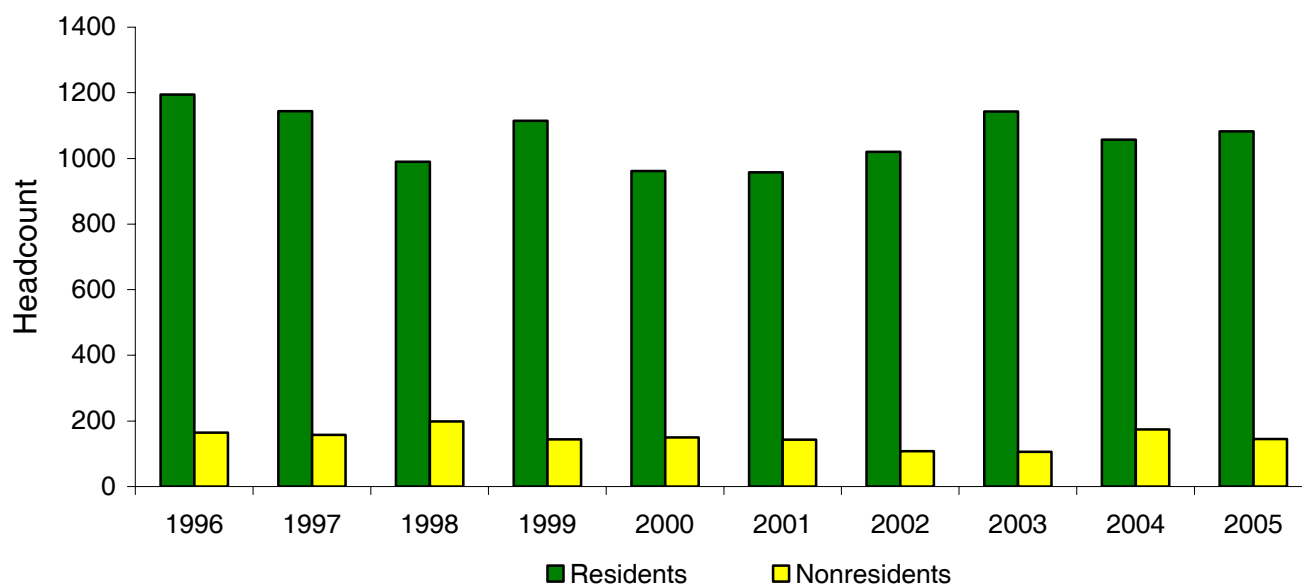
**Figure 2.7 Full-Time Undergraduate Enrollment by Gender
Fall 1996-2005**



**Table 2.8 Full-Time Undergraduate Enrollment by Residency
Fall 1996-2005**

Fall	Total Full-time	Residents		Nonresidents	
		Count	Percent	Count	Percent
1996	1359	1194	88	165	12
1997	1302	1144	88	158	12
1998	1189	990	83	199	17
1999	1259	1115	89	144	11
2000	1112	962	87	150	13
2001	1101	958	87	143	13
2002	1128	1020	90	108	10
2003	1249	1143	92	106	8
2004	1231	1057	86	174	14
2005	1227	1082	88	145	12

**Figure 2.8 Full-Time Undergraduate Enrollment by Residency
Fall 1996-2005**



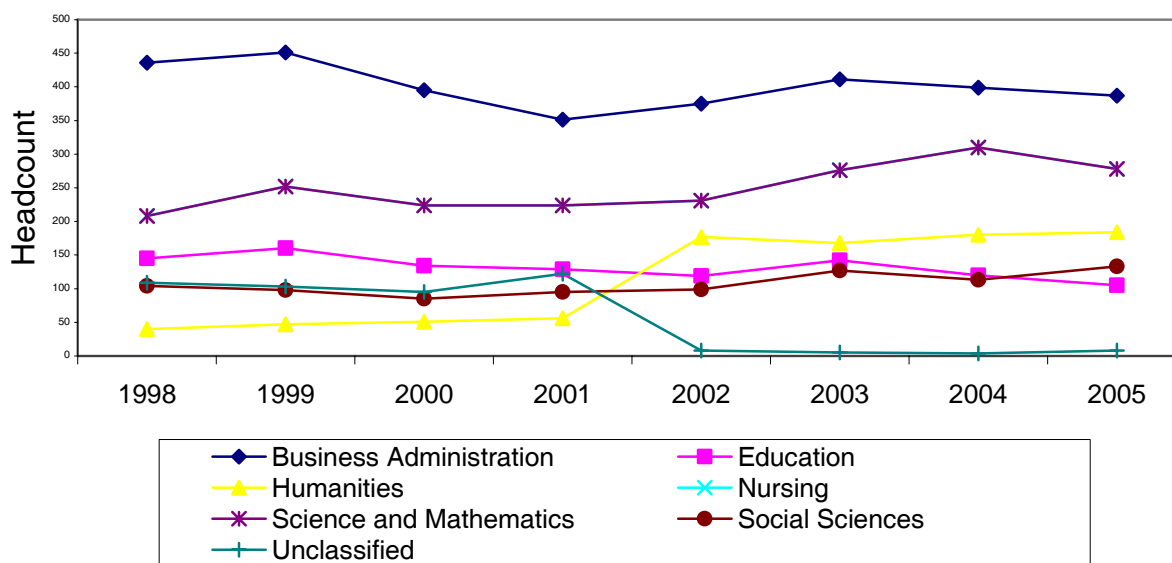
**Table 2.9 Full-Time Undergraduate Enrollment by Division
Fall 1998-2005**

Division	1998	1999	2000	2001	2002	2003	2004	2005
Business Administration	436	451	395	351	375	411	399	387
Education	145	160	134	129	119	142	120	105
Humanities*	40	47	51	56	177	168	180	184
Nursing	147	148	128	124	119	120	105	132
Science and Mathematics	208	252	224	224	231	276	310	278
Social Sciences	104	98	85	95	99	127	113	133
Humanities and Social Sciences*	—	—	—	—	—	—	—	317
Unclassified**	109	103	95	122	8	5	4	8
Total	1189	1259	1112	1101	1128	1249	1,231	1,227

* As of Fall 2005 the Social Sciences and Humanities Division have been combined.

** Unclassified includes undecided and no major code assigned.

**Figure 2.9 Full-Time Undergraduate Enrollment By Division
Fall 1998-2005**



**Table 2.10 Full-Time Undergraduate Enrollment by Division and Major
Fall 1996-2005**

Division/Major	1996	1997	1998	1999	2000	2001	2002	2003	2004	2005
BUSINESS ADMINISTRATION										
Accounting (AA)	11	0	5	8	10	9	11	18	17	16
Accounting (BA)	145	133	121	119	109	81	87	93	104	106
Business Administration	286	275	257	261	205	190	199	214	201	202
Business Management	28	17	17	21	20	24	28	34	27	27
Data Processing/Computer Info. System	25	6	4	30	41	39	43	46	46	32
Hotel and Restaurant Management	4	2	5	10	10	8	10	7	5	3
Office Assistance/Office Systems	5	3	2	2	0	0	0	2	0	1
EDUCATION										
Early Childhood Education	4	2	1	1	2	3	1	0	0	93
Elementary Education	144	143	143	159	132	126	113	129	104	12
Vocational Education	0	0	0	0	0	0	4	6	13	0
HUMANITIES / SOCIAL SCIENCES										
Caribbean Studies	1	0	0	0	0	0	0	0	0	0
English	14	15	17	21	19	26	15	24	21	27
Humanities	5	3	2	2	9	3	8	10	7	6
Humanities with Journalism	8	7	11	5	5	9	3	8	5	5
Journalism	0	0	0	0	0	0	1	2	1	0
Music Education	14	8	11	12	8	7	6	12	13	8
Police Science and Administration	4	7	7	8	9	11	13	11	8	11
Psychology	57	51	53	48	54	59	68	86	81	81
Social Sciences	20	13	32	39	21	24	18	25	21	29
Social Work	30	33	9	3	1	1	0	3	7	12
Spanish	2	1	1	0	0	0	1	0	0	1
Speech, Communication and Theater	10	6	3	7	10	11	9	14	15	12
Undecided	0	0	0	0	0	0	131	103	111	125
NURSING										
Nursing	156	147	144	148	128	124	119	122	108	132
SCIENCE AND MATH										
Biology	120	99	103	103	88	73	103	110	126	94
Chemistry	20	10	14	15	10	11	11	15	16	17
Chemistry with Physics	0	0	0	0	0	0	0	0	0	0
Computer Science	32	43	69	93	89	90	60	71	78	71
Engineering	18	0	2	0	7	9	14	19	17	18
Marine Biology	33	30	21	20	18	25	21	22	25	23
Mathematics	16	19	19	19	11	13	10	17	25	24
Physics	1	1	2	2	1	3	2	2	0	1
Pre-Medical Technology	0	0	0	0	0	0	0	0	0	0
Processed Technology	0	0	0	0	0	0	9	18	21	30
Undecided	0	0	0	0	0	0	0	1	4	0
UNCLASSIFIED										
	0	0	0	0	0	0	9	5	4	8